



# VOLVO DÚN LAOGHAIRE REGATTA

IN PARTNERSHIP WITH SPIRIT MOTOR GROUP



## THE SAILING INSTRUCTIONS



Photos: Oceansport, Fotosail

**11-14 July 2019**  
**[www.dlregatta.org](http://www.dlregatta.org)**



DMYC



NYC



RIYC



RStGYC



# GENERAL INFORMATION

## ORGANISING COMMITTEE

Don O'Dowd (Chairman), Con Murphy, Colin O'Brien, Martin McCarthy, Brian Craig, Timothy Goodbody, Peter Ryan, Grainne Ryan, Ciara Dowling.

## CLUB REPRESENTATIVES

Frank Guilfoyle (DMYC), Chris Doorly (NYC), Jerry Dowling (RIYC), Derek Ryan (RSGYC).

**Event Secretary:** Ciara Dowling

**Results:** Denis Kiely, Peadar Murphy

**Race Office Manager:** Catriona McNally

**Director of Racing:** Con Murphy

## PROTEST COMMITTEE

Joint Chairmen - Chris Lindsay (IJ IRL) & Mike Butterfield (IJ GBR)

Enrica Marni (ITA), Craig Evans (GBR) + Emmet Dalton, Eunice Kennedy, Jill Fleming and Mike Tyrell (all Irish)

## SUB COMMITTEE – RACING

Con Murphy (Chair), Brian Craig, Fintan Cairns, Neil Colin, Sandra Moore, Mal Nolan, Guy Kilroy, Tim Goodbody, Ronan Adams, Mark McGibney, Olivier Prouveur

## PRIZE GIVINGS

**Thursday 11<sup>th</sup> July** - Day Prize Giving  
2030 Dun Laoghaire Motor Yacht Club

**Saturday 13<sup>th</sup> July** - Day Prize Giving  
1900 Royal St George Yacht Club

**Friday 12<sup>th</sup> July** - Day Prize Giving  
1900 National Yacht Club

**Sunday 14<sup>th</sup> July** - Overall Prize Giving  
1600 Royal Irish Yacht Club

## CONTACT NUMBERS:

**DMYC** +353 1 280 1371

**NYC** +353 1 280 5725

**RIYC** +353 1 280 9452

**RSGYC** +353 1 280 1811

**RACE OFFICE:** [sec@dlregatta.org](mailto:sec@dlregatta.org)

## BERTHING / PARKING - VISITING BOATS

Berthing or parking for visiting boats (boats not already based in Dun Laoghaire) is included in the entry fee for the duration of the Regatta, from Wednesday 10<sup>th</sup> to Monday 15<sup>th</sup> July 2019. Boats shall be kept in their assigned places for the duration of the regatta. All visiting dry sailed boats and dinghies MUST vacate their allocated Club Parking by Monday 15<sup>th</sup> July 2019. If berthing is required outside the period stated above, competitors must contact the Event Secretary or Dun Laoghaire Marina who will advise on availability and cost.

## TEMPORARY MEMBERSHIP

The Dun Laoghaire Motor Yacht Club, the National Yacht Club, the Royal Irish Yacht Club and the Royal St George Yacht Club, represent the Volvo Dun Laoghaire Regatta Committee. All Helmsmen and their crews competing in the Regatta and volunteers assisting will be Temporary Members of the above clubs throughout the Regatta and will be bound by the Rules of those Clubs. The Clubs reserve the right to withdraw such temporary membership.

## SPECIAL NOTICES

Competitors shall keep clear of all commercial shipping entering and departing Dublin Port. Reference GR9.

## ACKNOWLEDGEMENTS

The Volvo Dun Laoghaire Regatta Committee wishes to thank Dublin Bay Sailing Club, Howth Yacht Club, Dun Laoghaire Rathdown County Council, and Marina Marketing & Management Ltd, for facilities provided and acknowledge the co-operation of Captain Michael McKenna, Dublin Port Harbour Master, Captain Simon Coate Dun Laoghaire Harbour Master and Tim Ryan Dun Laoghaire Harbour Operations Manager.

Our sincere thanks to all the club personnel and volunteers and also to those who have loaned their flagships, mark boats and ribs.

We acknowledge the very generous financial assistance received from all our sponsors and patrons, but in particular our title sponsors VOLVO Car Ireland Ltd and Spirit Motor Group Ltd who make the event possible.

Publication design and layout by  
Baily Publications.



# SAILING INSTRUCTIONS

## VOLVO DUN LAOGHAIRE REGATTA 2019

### EMERGENCY PROCEDURES AFLOAT

If an incident occurs afloat during the Volvo Dun Laoghaire Regatta the following procedure should be followed:

Go to VHF Channel 16 and Broadcast the following (announcing 3 times):

- 1) MAYDAY if boat is in distress.
- 2) PAN PAN if boat requires outside assistance.

In every case state:

The nature of the incident or injury. The name and position of your boat. For other difficulties call your Course VHF channel and advise the Race Officer of your problem.

# CONTENTS

42	GENERAL INFORMATION
44	GENERAL REGULATIONS
48	NORTH AREA
50	CENTRE AREA
52	SOUTH AREA
54	SOUTH BULL AREA
56	SALTHILL AREA
58	COASTAL AREA
61	TIDAL STREAMS - APPENDIX 1
62	CODE FLAGS - APPENDIX 2
63	FIXED MARK POSITIONS - APPENDIX 3
64	CHART OF RACE AREA - APPENDIX 4



# GENERAL REGULATIONS (GR)

## GR1 ORGANISING AUTHORITY & RULES

- 1.1 The Organising Authority of the Volvo Dun Laoghaire Regatta is Dublin Bay Regattas Limited a not-for-profit company which is beneficially owned by the Dun Laoghaire Motor Yacht Club (DMYC), the National Yacht Club (NYC), the Royal Irish Yacht Club (RIYC) and the Royal St George Yacht Club (RSGYC).
- 1.2 The regatta will be governed by the rules as defined in The Racing Rules of Sailing (RRS).
- 1.3 The Irish Sailing Prescriptions to the RRS 2017-2020 shall apply.
- 1.4 Except on the first day of the Regatta, a protest alleging a breach of a measurement rule shall not be grounds for a protest by a boat. The race committee, technical committee and protest committee may protest, including as a result of information arising from an invalid protest. This changes RRS 60.1, 60.2 and 60.3.
- 1.5
  - a) Each boat being scored under ECHO will be assigned an initial handicap by the Organising Authority based on the boat's IRC TCC or, where the boat does not have an IRC TCC, the boat's standard ECHO.
  - b) Assigned ECHO handicaps shall be revised during the Regatta. Revised handicaps will be published not later than 2130 on the day prior to coming into effect, except that on the first day of the regatta revised handicaps will be posted not later than 60 minutes after close of registration.

## GR2 NOTICES TO COMPETITORS

Notices to Competitors will be posted on the official notice board on the Regatta Website [www.dlregatta.org](http://www.dlregatta.org) and may be displayed on the board at the Race Office.

## GR3 CHANGES TO SAILING INSTRUCTIONS

Any change to the sailing instructions will be posted before 0930 on the day it will take effect, except any change to the scheduled times of races will be posted by 2100 on the day before it will take effect.

## GR4 SIGNALS MADE ASHORE

- 4.1 Signals made ashore will be displayed at the Race Office and may be repeated at the DMYC, the NYC, the RIYC and the RSGYC.
- 4.2 When the flag "AP" is displayed ashore, '1 minute' is replaced with 'not less than 60 minutes' in the race signal AP.
- 4.3 When flag "Y" is displayed ashore, RRS 40 applies and all competitors shall wear personal floatation devices at all times while afloat.
- 4.4 Adverse Weather: Flag "L" displayed over class flag(s) will indicate that the scheduled races will not be as programmed. The start and the course will be advised on the appropriate VHF Channel. The start may be from a signal vessel or from the hut positioned on the West Pier and the course will be sailed around fixed marks as shown on the chart in Appendix 4. The starts and class sequences will be published in an amendment to the Sailing Instructions not later than 90 minutes before the first start time. This amends Race Signals.

## GR5 SCHEDULE OF RACES

- 5.1 Dates of racing are from Thursday 11<sup>th</sup> July – Sunday 14<sup>th</sup> July 2019.
- 5.2 The schedule time for the warning signal for the first race each day is:

### Thursday 11th July 2019

1425: Offshore Class  
1455: All Areas

### Friday 12th July 2019

1025: Offshore Class  
1055: All Areas except Salthill & Classic Keelboat  
1155: Salthill Area and Classic Keelboat Class

### Saturday 13th July 2019

1125: Offshore Class  
1155: All Areas except Classic Keelboat  
1255: Classic Keelboat Class

### Sunday 14th July 2019

1025: Offshore Class  
1055: All Areas

- 5.3 Areas, Groups of Classes, Signal Vessels and Marks may be changed or substituted by the Race Committee.
- 5.4 On the last scheduled day no warning signal will be made after 1355.

**5.5 Scheduled Class Race Areas:**

CLASSES	Thurs 11th July	Fri 12th July	Sat 13th July	Sun 14th July
Cruiser Class 0 Cruiser Class 1 Cruiser Class 2 Beneteau 31.7	South (2 Races)	North (3 Races)	Coastal (1 Race)	Centre (2 Races)
Offshore Classic Keelboat	Coastal (1 Race)	Coastal (1 Race)	Coastal (1 Race)	Coastal (1 Race)
Non Spinnaker 1 Non Spinnaker 2 Sigma 33 Cruiser Class 3 Cruiser Class 4 Mixed Sportboat & J80	Coastal (1 Race) North (2 Races) Centre (2 Races)	Centre (3 Races) South (3 Races)	South (3 Races) Centre (3 Races)	Coastal (1 Race) North (2 Races)
SB20 Ruffian 23 & Dragon * Shipman Beneteau 211 Glen & Squib Mermaid & Seabird Half Rater Flying Fifteen	Salthill (2 Races) North (2 Races) Centre (2 Races) Salthill (2 Races) Salthill (2 Races)	South (3 Races) Centre (3 Races) South (3 Races) South Bull (3 races)	Centre (3 Races) North (3 Races) Centre (3 Races)	South (2 Races) Salthill (2 Races) North (2 Races)
Howth 17 RS Elite	No Race South Bull (2 races)	Howth to DL South Bull (3 races)	North (3 Races) South Bull (3 races)	DL to Howth South Bull (2 races)
GP14 Wayfarer Laser Standard & Radial 420 Myth & IDRA 14* Water Wag	No Race No Race No Race No Race Salthill (2 Races) No Race	Salthill (3 Races)	Salthill (3 Races)	Salthill (2 Races)

\*Dragon & IDRA 14 – no racing on Thursday 11<sup>th</sup> July.

**GR6 RACING AREAS AND MARKS**

- The Chart of the Race Area (Appendix 4) shows the approximate locations of the designated racing areas and fixed marks.
- The Fixed Mark Positions (Appendix 3) shows the approximate positions/identifying names and the letters of the marks which will be broadcast when setting Coastal, South or Fixed Mark courses.
- Start & finish flagships & marks:

Flagships Dodger Colour	Course Marks	Replacement Weather Mark
Salthill	Orange cylindrical inflatable	N/A
South Bull	Blue cylindrical inflatable	Orange cylindrical inflatable
Centre	Yellow or Yellow with Black Band cylindrical inflatable	N/A
North	Black or Black with White Band cylindrical inflatable	N/A
South	DBSC Racing Marks & Volvo Yellow inflatable Tophat	N/A
Coastal	DBSC Racing Marks, Volvo Yellow inflatable Tophat & Shipping Navigation Marks	N/A

**GR7 FLAGS**

- Class flags will be as indicated in the Area Sections and in Appendix 2.
- Class flags shall be clearly displayed from the backstay of Cruiser Class 0, Class 1, Class 2, Class 3, Class 4, Offshore and Non Spinnaker 1 and 2 throughout the regatta, and shall be a minimum size of 6” in the hoist for flags and 12” in the fly for numeral pennants.

**GR8 TIME LIMITS**

- 8.1 **ONE DESIGN KEELBOATS & DINGHIES** (All Areas except Coastal Area): Boats will be timed up to 15 minutes after the first boat of their class finishes; otherwise they will be scored Did Not Finish. This changes RRS 35, A3 and A5.
- 8.2 **CRUISER CLASSES (IRC & ECHO) MIXED SPORTBOAT & J80 CLASS** (All areas except Coastal Area): Boats will be timed up to 30 minutes after the second boat of their class finishes; otherwise they will be scored Did Not Finish. This changes RRS 35, A3 and A5.
- 8.3 **COASTAL AREA** (All classes): The time limit will be:
- 1800 on Thursday 11<sup>th</sup>, Friday 12<sup>th</sup> and Saturday 13<sup>th</sup> July.
  - 1330 on Sunday 14<sup>th</sup> July or 150 minutes after the start of that class in the event of a postponed start.
  - If the first boat in a class finishes within one hour prior to the time limit in 8.3 a) or 8.3 b) then the time limit for that class will be extended by 45 minutes from the finishing time of the first boat.
  - If no boat finishes within the time limit in 8.3 a) or 8.3 b), the race for that class will be abandoned. This changes RRS 35, A3 and A5.

**GR9 RESTRICTED AREAS**

While racing all boats are prohibited from entering the NO GO areas:

- Dublin Port:** the area bounded by the following: Poolbeg Lighthouse, navigation marks 8, 6, 4, Dublin Bay Buoy, navigation marks 1, 3, 5, 7 and North Bull Lighthouse (as shown in Appendix 4)
- Dalkey Sound** as shown in Appendix 4
- Bathing Areas:** at 40FT, Seapoint and Killiney marked by small yellow conical buoys. No boat shall sail inside these buoys.

**GR10 PROTESTS & REQUESTS FOR REDRESS**

- 10.1 Protest forms are available at the Race Office beside the Plaza. Protests and requests for redress or re-opening shall be delivered to the protest convener's office in the Race Office within the appropriate time limit.
- 10.2 For each Race Area, the protest time limit is 90 minutes after the last boat has finished the last race of the day, (60 minutes on the last day of the regatta) or the Race Committee signals no more racing today, whichever is later. The same time limit applies to protests by the Race Committee about incidents they observe in the racing area and to requests for redress. This changes RRS 61.3 and 62.2.
- 10.3 Notices will be posted on the notice board on the regatta website and in the window of the protest convener's office adjacent to the Race Office no later than 30 minutes after the protest time limit to inform competitors of hearings in which they are parties or named as witnesses.
- 10.4 Notices of protests by the Race or Protest Committee will be posted on the notice board on the regatta website and in the window of the protest convener's office adjacent to the Race Office to inform boats under RRS 61.1(b).
- 10.5 On the last scheduled day of racing a request for reopening a hearing shall be delivered:
- within the protest time limit if the party requesting reopening was informed of the decision on the previous day.
  - no later than 30 minutes after the party requesting reopening was informed of the decision on that day. This changes RRS 66.
- 10.6 On the last scheduled day of racing a request for redress based on a Protest Committee decision shall be delivered no later than 30 minutes after the decision was posted. This changes RRS 62.2.
- 10.7 **Post-Race Penalty:**
- A boat that may have broken a rule of Part 2 or rule 31 may, after finishing the race concerned and before the start of any related protest hearing, complete and submit a Post-Race Penalty Declaration Form at the Race Office accepting a Post-Race Penalty – a 30% scoring penalty (SCP) calculated as stated in RRS 44.3 (c), however she shall not be scored worse than DSQ. However, if the boat caused injury or serious damage or, despite taking a penalty, gained a significant advantage in the race or series by her breach her penalty shall be to retire.
  - When a Post-Race Penalty is accepted: (a) Neither boat nor a protest committee may then revoke or remove the penalty. (b) The boat shall not be penalized further in a protest hearing when the protest committee decided that it was appropriate to the facts found and the applicable rules.
- 10.8 Parties concerned in protests should identify themselves to the Protest Convener and wait in the designated area adjacent to the Race Office.
- 10.9 The Protest committee has discretion as to penalties for breaches of Sailing Instructions GR7.2, 9, 13, 14, 15 and RRS 55 (Trash).

**GR11 PENALTY SYSTEM**

For SB20, Classic Keelboat and Water Wag classes RRS 44.1 is changed so that the Two-Turn Penalty is replaced by the One-Turn Penalty.

**GR12 SCORING & RESULTS**

- 12.1 One race is required to be completed to constitute a series.
- 12.2 a) When fewer than four races have been completed, a boat's series score will be the total of her race scores.  
b) When from four to eight races have been completed, a boat's series score will be the total of her race scores, excluding her worst score.  
c) When nine or more races have been completed, a boat's series score will be the total of her race scores excluding her two worst scores.
- 12.3 **RS Elite Class only**  
a) Three races are required to be completed to constitute a series.  
b) When fewer than four races have been completed a boat's series score will be the total of her race scores.  
c) When four or more races have been completed, a boat's series score will be the total of her race scores excluding her worst score.
- 12.4 **For the GP14 Class only**, 12.2 b) and c) is changed to discard the worst score when up to seven races are completed and discard the two worst scores when all eight races scheduled are completed. This is to meet class guidelines for the Leinster Championships.
- 12.5 Results will be posted on the Regatta Website.

**GR13 SAFETY REGULATIONS & SAFETY**

- 13.1 All boats shall comply with their Class Safety Regulations.
- 13.2 All keelboats shall have on board an operating VHF radio.
- 13.3 A boat that retires from a race shall notify the Race Committee as soon as possible.
- 13.4 The wearing of personal flotation devices is mandatory when afloat for all dinghy classes and strongly recommended for all other classes.
- 13.5 Cruiser Classes – boats should not race with their anchors in the bow position.

**GR14 EQUIPMENT & MEASUREMENT CHECKS**

A boat or equipment may be inspected at any time for compliance with the class rules and sailing instructions.

**GR15 ADVERTISING**

Boats shall display advertising supplied by the Organising Authority in accordance with instructions issued with the advertising and ensure that it stays in place for the duration of the Regatta.

**GR16 PRIZES**

- 16.1 a) Overall first, second and third prize will be awarded for the series for each class with ten or more entrants.  
b) Overall first and second prize will be awarded for the series for each class with seven to nine entrants.  
c) Overall first will be awarded for the series for each class with six or less entrants.
- 16.2 a) A day prize will be awarded to the best boat in each class (including IRC and ECHO) on Thursday, Friday and Saturday. No boat will be awarded more than one day prize.  
b) Classes with six or less entrants will be awarded day prizes on Saturday only and classes with twenty five or more entrants will be awarded two day prizes on Friday and Saturday.
- 16.3 Perpetual trophies are listed in the South Area section.

**GR17 DISCLAIMER OF LIABILITY**

- 17.1 Competitors participate in the regatta entirely at their own risk. **See RRS 4, Decision to Race.** The Organizing Authority will not accept any liability for material damage or personal injury, or death sustained in conjunction with or prior to, during, or after the regatta.
- 17.2 The decision with regard to starting and continuing to race lies exclusively with the skipper of each boat, who is at all times personally responsible for the safety of the boat and its crew. Neither the Organising Authority, DMYC, NYC, RIYC, RSGYC, Sponsors and Stakeholders who include Dublin Port Company and Dun Laoghaire Rathdown County Council nor any of their officers/committees/representatives will accept any liability for material damage or personal injury or death sustained in conjunction with or prior to, during, or after the Regatta.

**GR18 INSURANCE**

Each participating boat shall be insured with valid third-party liability insurance with a minimum cover of €3,000,000 per event or the equivalent.



# NORTH AREA (N)

## WINDWARD/LEEWARD OR FIXED MARK

**STARTING AREA:** IN THE VICINITY OF MIDDLE MARK (M) (APPROX 53°19.55'N & 06°07.48'W)

**VHF CHANNEL:** 72

**RACE OFFICER:** DAVID LOVEGROVE IRO

**START & FINISH VESSELS:** DISPLAYING BLACK DODGERS

**START & FINISH MARKS:** Starting and finishing marks may be either a rib with a flag, an inflatable candy striped conical mark, a dan buoy or similar. The inner distance mark, if laid, may be of the dan buoy type.

**WINDWARD/LEEWARD MARKS:** The course marks will be black inflatable marks. The inner windward mark (course B) will be a black inflatable mark with a white band.

**FIXED MARK:** The Chart in Appendix 4 indicates the letters of the fixed marks and the approximate positions are shown in Appendix 3.

DAY & DATE	FIRST WARNING SIGNAL	STARTING SEQUENCE	CLASS FLAG	HW DUN LAOGHAIRE
<b>THURSDAY 11<sup>TH</sup> JULY</b> 2 RACES	1455	Sigma 33 Cruiser Class 3 Ruffian 23 Cruiser Class 4	ICF "E" ICF Numeral 3 ICF "R" ICF Numeral 4	0743 3.9m
<b>FRIDAY 12<sup>TH</sup> JULY</b> 3 RACES	1055	Cruiser Class 0 Cruiser Class 1 Cruiser Class 2 Beneteau 31.7	ICF Numeral 0 ICF Numeral 1 ICF Numeral 2 ICF Numeral 9	0850 3.9m
<b>SATURDAY 13<sup>TH</sup> JULY</b> 3 RACES	1155	Shipman Beneteau 211 Glen and Squib Mermaid & Seabird Half Rater Howth 17	ICF "W" ICF "A" ICF "K" & ICF "G" ICF "M" & ICF "F" ICF "C"	0953 3.9m
<b>SUNDAY 14<sup>TH</sup> JULY</b> 2 RACES	1055	Cruiser Class 3 Mixed Sportboat & J80 Cruiser Class 4 Flying Fifteen	ICF Numeral 3 ICF 3 <sup>rd</sup> Substitute & ICF "E" ICF Numeral 4 Naval Numeral 6	1050 3.9m

### N1 THE START

- 1.1 To alert boats that a sequence of races will begin soon an orange flag will be displayed with one sound signal for at least three minutes before a warning signal is displayed.
- 1.2 The starting line will be between the red and white staff or the main mast on the race committee starting vessel at the starboard end and the port-end starting mark, or a staff on a rib displaying an orange flag.
- 1.3 Boats whose warning signal has not been made shall avoid the starting area during the starting sequence for other races.
- 1.4 A boat starting later than 4 minutes after her starting signal will be scored Did Not Start without a hearing. This changes RRS A3 and A5.
- 1.5 In addition to RRS 29.1, the Race Committee will if possible, broadcast individual OCS sail numbers no earlier than one minute after the starting signal on the designated VHF channel. Failure to do so or delay or the order of the broadcast will not be grounds for a request for redress. This changes RRS 62.1(a).



## N2 COURSE

- 2.1 The course will be a Windward Leeward course shown in the course diagram with two windward marks A and B. No offset mark will be set for windward mark B.
- 2.2 Board 'A' with numeral board will be displayed on the race committee starting vessel to indicate Course A and the number of rounds. Board 'B' with numeral board will indicate Course B and the number of rounds.
- 2.3 The diagram shows the order in which marks are to be rounded or passed, the side on which each mark is to be left and the number of rounds.
- 2.4 The boards will be displayed on the race committee starting vessel from approximately 4 minutes before the start of each class to approximately 1 minute after the start of each class and it may be broadcast on the designated VHF channel. This changes RRS 27.1.
- 2.5 No later than the warning signal the race committee starting vessel may display the approximate compass bearing of the first leg.
- 2.6 Leeward Gate: while every effort will be made to lay a leeward gate, in the event where this is not possible, a single mark will be laid as the leeward mark and this mark shall be rounded to port.
- 2.7 Offset Mark: while every effort will be made to lay the offset mark (O), in the event that this is not possible, boats shall, after rounding the windward mark to port, sail directly to the leeward gate or mark.

## N3 CHANGE OF THE NEXT LEG OF THE COURSE

Minor adjustments may be made to the course without indicating a course change. This changes RRS 33.

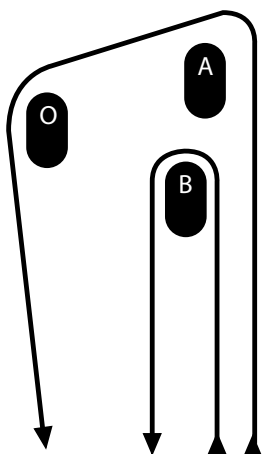
## N4 THE FINISH

The finish line will be between a staff/mast on the finishing vessel at the port end and the course side of an inflatable mark or dan buoy at the starboard end.

## N5 FIXED MARK COURSE

- 5.1 When Flag "F" is displayed a fixed mark course will be set.
- 5.2 The course will be sailed around fixed marks as shown on the chart in Appendix 4.
- 5.3 The order in which the marks are to be rounded or passed and the required side will be broadcast on the designated VHF Channel and will be displayed on a board on the race committee starting vessel.
- 5.4 The Race Committee will broadcast the course to be sailed before the warning signal and it will be repeated before the start of each class.
- 5.5 The finish will be at the last mark of the course or at a finish line that will be to windward of the last mark of the course.

## COURSE DIAGRAM - WINDWARD LEEWARD



### Course A:

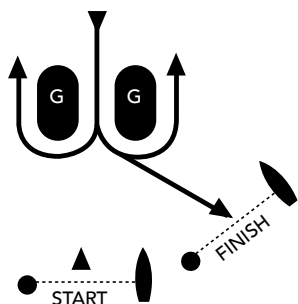
Signal	Mark Rounding Order
A1	Start – A – O – Gate - Finish
A2	Start – A – O – Gate – A – O – Gate - Finish
A3	Start – A – O – Gate – A – O – Gate – A – O – Gate - Finish
A4	Start – A – O – Gate – A – O – Gate – A – O – Gate – A – O – Gate - Finish

All marks to be rounded to port except when sailing through the gate

### Course B:

Signal	Mark Rounding Order
B1	Start – B – Gate – Finish
B2	Start – B – Gate – B – Gate - Finish
B3	Start – B – Gate – B – Gate – B – Gate - Finish
B4	Start – B – Gate – B – Gate – B – Gate – B – Gate - Finish

All marks to be rounded to port except when sailing through the gate



# CENTRE AREA (CT)

## WINDWARD/LEEWARD OR FIXED MARK

**STARTING AREA:** IN THE VICINITY OF BOYD MARK (K) (APPROX 53° 18.85'N & 06° 07.37'W)

**VHF CHANNEL:** 68

**RACE OFFICER:** BILL O'HARA IRO

**START & FINISH VESSELS:** DISPLAYING YELLOW DODGERS

**START & FINISH MARKS:** Starting and finishing marks may be either a rib with a flag, an inflatable candy striped conical mark, a dan buoy or similar. The inner distance mark, if laid, may be of the dan buoy type.

**WINDWARD/LEEWARD MARKS:** The course marks will be yellow inflatable marks. The inner windward mark (course B) will be a yellow inflatable mark with a black band.

**FIXED MARK:** The Chart in Appendix 4 indicates the letters of the fixed racing marks. The approximate positions are shown in Appendix 3.

DAY & DATE	FIRST WARNING SIGNAL	STARTING SEQUENCE	CLASS FLAG	HW DUN LAOGHAIRE
<b>THURSDAY 11<sup>TH</sup> JULY</b> 2 RACES	1455	Mixed Sportboat & J80 Shipman Beneteau 211 Glen & Squib	ICF 3 <sup>rd</sup> Substitute & ICF "E" ICF "W" ICF "A" ICF "K" & ICF "G"	0743 3.9m
<b>FRIDAY 12<sup>TH</sup> JULY</b> 3 RACES	1055	Sigma 33 Non Spinnaker 1 Cruiser Class 3 Shipman Non Spinnaker 2 Cruiser Class 4	ICF "E" ICF Numeral 1 ICF Numeral 3 ICF "W" ICF Numeral 2 ICF Numeral 4	0850 3.9m
<b>SATURDAY 13<sup>TH</sup> JULY</b> 3 RACES	1155	Mixed Sportboat & J80 SB20 Ruffian 23 & Dragon Flying Fifteen	ICF 3 <sup>rd</sup> Substitute & ICF "E" ICF "J" ICF "R" & ICF "D" Naval Numeral 6	0953 3.9m
<b>SUNDAY 14<sup>TH</sup> JULY</b> 2 RACES	1055	Cruiser Class 0 Cruiser Class 1 Cruiser Class 2 Beneteau 31.7	ICF Numeral 0 ICF Numeral 1 ICF Numeral 2 ICF Numeral 9	1050 3.9m

### CT1 THE START

- 1.1 To alert boats that a sequence of races will begin soon an orange flag will be displayed with one sound signal for at least three minutes before a warning signal is displayed.
- 1.2 The starting line will be between the red and white staff or the main mast on the race committee starting vessel at the starboard end and the port-end starting mark, or a staff on a rib displaying an orange flag.
- 1.3 Boats whose warning signal has not been made shall avoid the starting area during the starting sequence for other races.
- 1.4 A boat starting later than 4 minutes after her starting signal will be scored Did Not Start without a hearing. This changes RRS A3 and A5.
- 1.5 In addition to RRS 29.1, the Race Committee will if possible, broadcast individual OCS sail numbers no earlier than one minute after the starting signal on the designated VHF channel. Failure to do so or delay or the order of the broadcast will not be grounds for a request for redress. This changes RRS 62.1(a)

### CT2 COURSE

- 2.1 The course will be a Windward Leeward course shown in the course diagram with two windward marks A and B. No offset mark will be set for windward mark B.
- 2.2 Board 'A' with numeral board will be displayed on the race committee starting vessel to indicate Course A and the number of rounds. Board 'B' with numeral board will indicate Course B and the number of rounds.
- 2.3 The diagram shows the order in which marks are to be rounded or passed, the side on which each mark is to be rounded and the number of rounds.
- 2.4 The boards will be displayed on the race committee starting vessel from approximately 4 minutes before the start of each class to approximately 1 minute after the start of each class and it may be broadcast on the designated VHF channel. This changes RRS 27.1.
- 2.5 No later than the warning signal the race committee starting vessel may display the approximate compass bearing of the first leg.
- 2.6 Leeward Gate: while every effort will be made to lay a leeward gate, in the event where this is not possible, a single mark will be laid as the leeward mark and this mark shall be rounded to port.
- 2.7 Offset Mark: while every effort will be made to lay the offset mark (O), in the event that this is not possible, boat shall, after rounding the windward mark to port, sail directly to the leeward gate or mark.

### CT3 CHANGE OF THE NEXT LEG OF THE COURSE

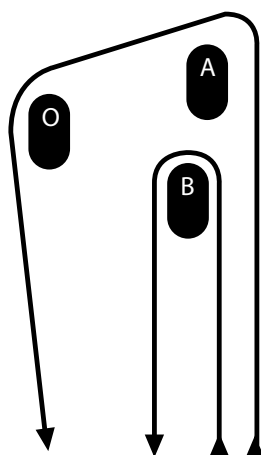
Minor adjustments may be made to the course without indicating a course change. This changes RRS 33.

### CT4 THE FINISH

The finish line will be between a staff/mast on the finishing vessel at the port end and the course side of an inflatable mark or dan buoy at the starboard end.

### CT5 FIXED MARK COURSE

- 5.1 When Flag "F" is displayed a fixed mark course will be set.
- 5.2 The course will be sailed around fixed marks as shown on the chart in Appendix 4.
- 5.3 The order in which the marks are to be rounded or passed and the required side will be broadcast on the designated VHF Channel and will be displayed on a board on the race committee starting vessel.
- 5.4 The Race Committee will broadcast the course to be sailed before the warning signal and it will be repeated before the start of each class.
- 5.5 The finish will be at the last mark of the course or at a finish line that will be to windward of the last mark of the course.

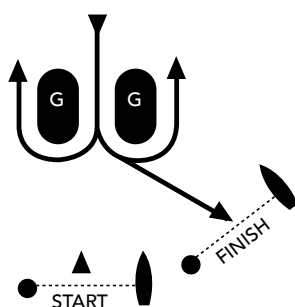


## COURSE DIAGRAM - WINDWARD LEeward

#### Course A:

Signal	Mark Rounding Order
A1	Start – A – O – Gate - Finish
A2	Start – A – O – Gate – A – O – Gate - Finish
A3	Start – A – O – Gate – A – O – Gate – A – O – Gate - Finish
A4	Start – A – O – Gate – A – O – Gate – A – O – Gate – A – O – Gate - Finish

All marks to be rounded to port except when sailing through the gate



#### Course B:

Signal	Mark Rounding Order
B1	Start – B – Gate – Finish
B2	Start – B – Gate – B – Gate - Finish
B3	Start – B – Gate – B – Gate – B – Gate - Finish
B4	Start – B – Gate – B – Gate – B – Gate – B – Gate - Finish

All marks to be rounded to port except when sailing through the gate

# SOUTH AREA (S)

## FIXED MARK COURSE

**STARTING AREA:** IN THE VICINITY OF OMEGA MARK (Y) (Approx 53° 17.78'N & 06° 06.23'W)

**VHF CHANNEL:** 77

**RACE OFFICER:** JACK ROY IRO

**START & FINISH VESSELS:** DISPLAYING GREEN DODGERS

**START & FINISH MARKS:** Starting and finishing marks may be either a rib with a flag, an inflatable candy striped conical mark, a dan buoy or similar. The inner distance mark, if laid, may be of the dan buoy type.

**COURSE MARKS:** The Chart in Appendix 4 indicates the letters/name and the approximate positions/type of mark are shown in Appendix 3.

DAY & DATE	FIRST WARNING SIGNAL	STARTING SEQUENCE	CLASS FLAG	HW DUN LAOGHAIRE
<b>THURSDAY 11<sup>TH</sup> JULY</b> 2 RACES	1455	Cruiser Class 0 Cruiser Class 1 Cruiser Class 2 Beneteau 31.7	ICF Numeral 0 ICF Numeral 1 ICF Numeral 2 ICF Numeral 9	0743 3.9m
<b>FRIDAY 12<sup>TH</sup> JULY</b> 3 RACES	1055	Mixed Sportboat & J80 SB20 Ruffian 23 & Dragon Beneteau 211 Glen & Squib Mermaid & Seabird Half Rater	ICF 3 <sup>rd</sup> Substitute & ICF "E" ICF "J" ICF "R" & ICF "D" ICF "A" ICF "K" & ICF "G" ICF "M" & ICF "F"	0850 3.9m
<b>SATURDAY 13<sup>TH</sup> JULY</b> 3 RACES	1155	Sigma 33 Non Spinnaker 1 Cruiser Class 3 Non Spinnaker 2 Cruiser Class 4	ICF "E" ICF Numeral 1 ICF Numeral 3 ICF Numeral 2 ICF Numeral 4	0953 3.9m
<b>SUNDAY 14<sup>TH</sup> JULY</b> 2 RACES	1055	SB20 Shipman Ruffian 23 & Dragon Beneteau 211 Glen & Squib	ICF "J" ICF "W" ICF "R" & ICF "D" ICF "A" ICF "K" & ICF "G"	1050 3.9m



### S1 THE START

- 1.1 To alert boats that a sequence of races will begin soon an orange flag will be displayed with one sound signal for at least three minutes before a warning signal is displayed.
- 1.2 The starting line will be between the red and white staff or the main mast on the race committee starting vessel at the starboard end and the port-end starting mark or a staff on a rib displaying an orange flag.
- 1.3 Boats whose warning signal has not been made shall avoid the starting area during the starting sequence for other races.
- 1.4 A boat starting later than 4 minutes after her starting signal will be scored Did Not Start without a hearing. This changes RRS A3 and A5.
- 1.5 In addition to RRS 29.1, the Race Committee will if possible, broadcast individual OCS sail numbers no earlier than one minute after the starting signal on the designated VHF channel. Failure to do so or delay or the order of the broadcast will not be grounds for a request for redress. This changes RRS 62.1(a).

### S2 COURSE

- 2.1 The course will be decided on the day of the race and displayed on a board on the race committee starting vessel. The course will be broadcast on the designated VHF channel for the area.
- 2.2 The course will be sailed around fixed marks as shown on the chart in Appendix 4 and approximate positions in Appendix 3.
- 2.3 The race committee will broadcast the course to be sailed before the warning signal and it will be repeated at the start of each class.
- 2.4 No later than the warning signal the race committee starting vessel may display the approximate compass bearing of the first leg.

### S3 THE FINISH

- 3.1 The finish line is between a staff/mast on the finishing vessel at the starboard end and the course side of an inflatable mark or dan buoy at the port end.
- 3.2 The finish will be at a finish line to windward of the last mark of the course.

PERPETUAL TROPHIES	
Awarded to	Trophy Name
Best Visiting Boat	Salamander Trophy presented by Royal Dee Yacht Club
Best Dinghy/Small Keelboat	National Yacht Club Darthula Trophy
Best One Design Keelboat	Royal Irish Yacht Club HM Naval Base Trophy
Best Overall IRC	The Volvo Trophy
Boat of the Week	The Dubarry Shamrock Trophy
Royal Dee Irish Sea Offshore Championship	Royal Dee Yacht Club Trophy
Offshore Class Challenge Trophy	Sealink Trophy
Best Dublin Bay Sailing Club Non Spinnaker ECHO	Dun Laoghaire Regatta Open Championship Trophy
Best Overall ECHO	Royal Irish Yacht Club Perpetual Trophy
Best Overall Ruffian 23	Dun Laoghaire Motor Yacht Club Perpetual Trophy
Best Overall IDRA 14	Dun Laoghaire Motor Yacht Club Perpetual Trophy
Best Overall Flying 15	National Yacht Club Perpetual Trophy
Most Successful RSGYC Boat	Royal St George Yacht Club - Royal Kingstown Yacht Club Trophy
Most Successful Classic Yacht	Kingstown 200 Trophy
Most Successful Water Wag	Collen Cup presented by Pamela Collen

# SOUTH BULL AREA (SB)

## WINDWARD/LEEWARD

**STARTING AREA:** IN THE VICINITY OF SEAPOINT MARK (C) (APPROX 53° 19.48'N & 06° 08.60'W)

**VHF CHANNEL:** 74

**RACE OFFICER:** PETER CROWLEY IRO

**SIGNAL VESSEL:** DISPLAYING BLUE DODGERS

**START & FINISH MARKS:** Starting and finishing marks may be either a rib with a flag, an inflatable candy striped conical mark, a dan buoy or similar. The inner distance mark, if laid, may be of the dan buoy type.

**WINDWARD LEEWARD MARKS:** The course marks will be blue inflatable marks and the replacement weather mark an orange mark.

DAY & DATE	FIRST WARNING SIGNAL	STARTING SEQUENCE	CLASS FLAG	HW DUN LAOGHAIRE
<b>THURSDAY 11<sup>TH</sup> JULY</b> 2 RACES	1455	RS Elite	ICF "E"	0743 3.9m
<b>FRIDAY 12<sup>TH</sup> JULY</b> 3 RACES	1055	RS Elite Flying Fifteen	ICF "E" Naval Numeral 6	0850 3.9m
<b>SATURDAY 13<sup>TH</sup> JULY</b> 3 RACES	1155	RS Elite	ICF "E"	0953 3.9m
<b>SUNDAY 14<sup>TH</sup> JULY</b> 2 RACES	1055	RS Elite	ICF "E"	1050 3.9m

### SB1 THE START

- 1.1 To alert boats that a sequence of races will begin soon an orange flag will be displayed with one sound signal for at least three minutes before a warning signal is displayed.
- 1.2 The starting line will be between a red and white staff or the main mast on the signal vessel at the starboard end and the port-end starting mark, or a staff on a rib displaying an orange flag.
- 1.3 Boats whose warning signal has not been made shall avoid the starting area during the starting sequence for other races.
- 1.4 A boat starting later than 4 minutes after her starting signal will be scored Did Not Start without a hearing. This changes RRS A3 and A5.
- 1.5 In addition to RRS 29.1, the Race Committee will if possible, broadcast individual OCS sail numbers no earlier than one minute after the starting signal on the designated VHF channel. Failure to do so or delay or the order of the broadcast will not be grounds for a request for redress. This changes RRS 62.1(a).

### SB2 COURSES

- 2.1 Course diagram shows the order in which marks are to be rounded or passed, the side on which each mark is to be left and the number of rounds.
- 2.2 The number of rounds to be sailed by each class will be shown on a number board displayed on the signal vessel from approximately 4 minutes before the start of each class to approximately 1 minute after the start of each class and it may be broadcast on the designated VHF channel. This changes RRS 27.1.
- 2.3 No later than the warning signal the signal vessel may display the approximate compass bearing of the first leg.
- 2.4 Leeward Gate: while every effort will be made to lay a leeward gate, in the event where this is not possible, a single mark will be laid as the leeward mark and this mark shall be rounded to port.
- 2.5 Offset Mark: while every effort will be made to lay the offset mark (O), in the event that this is not possible, boats shall, after rounding the windward mark to port, sail directly to the leeward gate or mark.

**SB3 CHANGE THE NEXT LEG OF THE COURSE**

- 3.1 The position of any laid inflatable mark(s) may be adjusted by up to approximately plus or minus 10 degrees relative to the previous laid mark(s) and/or up to approximately 200 metres to windward or leeward without signal. This changes RRS 33.
- 3.2 For changes greater than those described in SB3.1.
  - a) To facilitate course adjustment the Race Committee may, after the start, lay a replacement windward mark which will become the mark for the subsequent rounds. This mark may be an orange mark. When the replacement mark is already in use, the course may be further reset using the original mark.
  - b) A new offset mark will not be laid, after rounding the new windward mark to port boats sail directly to the leeward gate or mark.
  - c) Any such change of course will be signaled at the leeward gate.
  - d) A boat shall not request redress under 60.1(b) because of an action or no action by the race committee under this instruction.

**SB4 SHORTENED COURSE**

- 4.1 Courses may be shortened at a mark or gate in accordance with RRS 32.2(a).
- 4.2 The number of rounds may be shortened at the leeward gate by a boat flying Flag “S” over Flag “F” and accompanied by repeated sound signals. If this occurs boats should round the leeward gate as normal and then sail directly to the finishing line.

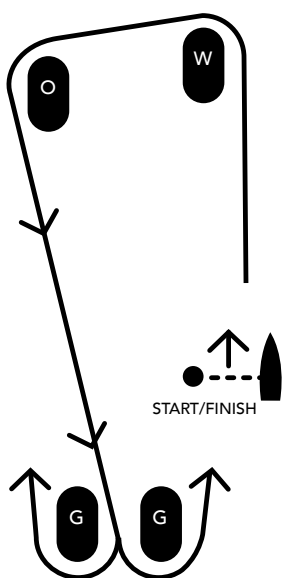
**SB5 THE FINISH**

The finish line will be between a staff/mast on the signal vessel at the starboard end and the course side of an inflatable mark or dan buoy at the port end.

**SB6 RS ELITE ONLY**

- 6.1 **Substitution of Crew or Equipment**
  - a) Substitution of competitors will not be allowed without the prior written approval of the Race Committee.
  - b) Substitution of damaged or lost equipment will not be allowed unless approved by the Race Committee. Requests for substitution shall be made at the first reasonable opportunity.
- 6.2 **Radio Communication**
  - a) All helms are encouraged to carry VHF radios both for safety reasons and also to monitor transmissions made by the Race Committee on the designated channel.
  - b) A boat shall neither make nor receive radio transmissions which are not available to all boats. This restriction also applies to mobile phones.

**COURSE DIAGRAM - WINDWARD LEEWARD**



Signal	Mark Rounding Order
1	Start – W – O – Gate - Finish
2	Start - W - O - Gate - W - O- Gate - Finish
3	Start – W – O – Gate – W – O – Gate – W – O – Gate - Finish
4	Start – W – O – Gate – W – O – Gate – W – O – Gate – W – O – Gate - Finish

All marks to be rounded to port except when sailing through the gate

# SALTHILL AREA (SH)

## TRAPEZOID

**STARTING AREA:** IN THE VICINITY OF SALTHILL MARK (A) (APPROX 53° 18.36'N & 06° 09.00'W)

**VHF CHANNEL:** 71

**RACE OFFICERS:** HARRY GALLAGHER NRO

**START & FINISH VESSELS:** DISPLAYING ORANGE DODGERS

**START & FINISH MARKS:** Starting and finishing marks may be either a rib with a flag, an inflatable candy striped conical mark, a dan buoy or similar. The inner distance mark, if laid, may be of the dan buoy type.

**TRAPEZIOD MARKS:** The course marks will be orange cylindrical inflatable marks.

DAY & DATE	FIRST WARNING SIGNAL	STARTING SEQUENCE	CLASS FLAG	HW DUN LAOGHAIRE
<b>THURSDAY 11<sup>TH</sup> JULY</b> 2 RACES	1455	SB20 Flying Fifteen Mermaid Seabird Half Rater Myth	ICF "J" Naval Numeral 6 ICF "M" ICF "F" ICF "H"	0743 3.9m
<b>FRIDAY 12<sup>TH</sup> JULY</b> 3 RACES	1155	GP14 Wayfarer IDRA 14 & Myth 420 Laser Standard & Radial Water Wag	GP14 Class Flag ICF "E" ICF "Q" & ICF "H" 420 Class Flag Laser Class Flag Water Wag Burgee	0850 3.9m
<b>SATURDAY 13<sup>TH</sup> JULY</b> 3 RACES	1155	GP14 Wayfarer IDRA 14 & Myth 420 Laser Standard & Radial Water Wag	GP14 Class Flag ICF "E" ICF "Q" & ICF "H" 420 Class Flag Laser Class Flag Water Wag Burgee	0953 3.9m
<b>SUNDAY 14<sup>TH</sup> JULY</b> 2 RACES	1055	GP14 Mermaid & Seabird Half Rater Wayfarer IDRA 14 & Myth 420 Laser Standard & Radial Water Wag	GP14 Class Flag ICF "M" & ICF "F" ICF "E" ICF "Q" & ICF "H" 420 Class Flag Laser Class Flag Water Wag Burgee	1050 3.9m

### SH1 THE START

- 1.1 To alert boats that a sequence of races will begin soon an orange flag will be displayed with one sound signal for at least three minutes before a warning signal is displayed.
- 1.2 The starting line will be between a red and white staff or the main mast on the race committee starting vessel at the starboard end and the port-end starting mark, or a staff on a rib displaying an orange flag.
- 1.3 Boats whose warning signal has not been made shall avoid the starting area during the starting sequence for other races.
- 1.4 A boat starting later than 4 minutes after her starting signal will be scored Did Not Start without a hearing. This changes RRS A3 and A5.



## SH2 COURSES

- 2.1 Board 'I' with numeral board will indicate Inner Trapezoid course and number of rounds (Diagram 1).  
Board 'O' with numeral board will indicate Outer Trapezoid and number of rounds (Diagram 2).
- 2.2 The letter and number boards will be shown on the race committee starting vessel from approximately 4 minutes before the start of each class to approximately 1 minute after the start of each class.
- 2.3 The Diagrams 1 and 2 show the courses, including the course signals, the order in which marks are to be rounded or passed, and the side on which each mark is to be left. Mark 3 and mark 4 are shown as a gate, 3s/3p and 4s/4p, which the Race Committee may replace by a single mark 3 or 4. If a single mark 3 or 4 is used, it is to be left to port.
- 2.4 No later than the warning signal, the race committee starting vessel may display the approximate compass bearing of the first leg.
- 2.5 **Water Wag:** Fri 12th/Sat 13th July: When a trapezoid course is in use; the Water Wags shall sail a windward/leeward course on the inner trapezoid and finish between the race committee starting signal vessel and an outer limit mark set on her starboard side. The number of rounds shall be displayed on a board on the race committee starting vessel.

## SH3 CHANGE OF THE NEXT LEG OF THE COURSE

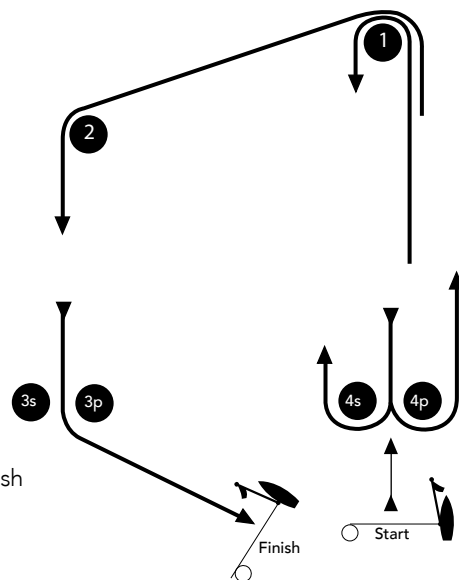
Minor adjustments may be made to the course without indicating a course change. This changes RRS 33.

## SH4 THE FINISH

The finish line will be between a staff/mast on the finishing vessel at the port end and the course side of an inflatable mark or dan buoy at the starboard end.

**DIAGRAM NO.1  
INNER TRAPEZOID**

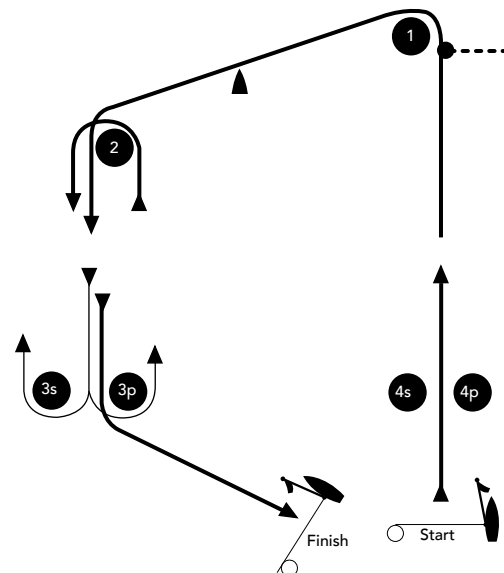
Signal	Mark	Rounding	Order
<b>I2</b>	Start - 1 - 4s/4p - 1 - 2 - 3p - Finish		
<b>I3</b>	Start - 1 - 4s/4p - 1 - 4s/4p - 1 - 2 - 3p - Finish		
<b>I4</b>	Start - 1 - 4s/4p - 1 - 4s/4p - 1 - 4s/4p - 1 - 2 - 3p - Finish		



**DIAGRAM NO. 2  
OUTER TRAPEZOID**

Signal	Mark	Rounding	Order
<b>O1</b>	Start - 1 - 2 - 3s/3p - Finish		
<b>O2</b>	Start - 1 - 2 - 3s/3p - 2 - 3p - Finish		
<b>O3</b>	Start - 1 - 2 - 3s/3p - 2 - 3s/3p - 2 - 3p - Finish		
<b>O4</b>	Start - 1 - 2 - 3s/3p - 2 - 3s/3p - 2 - 3s/3p - 2 - 3p - Finish		

All marks to be rounded to port



# COASTAL AREA (C)

**STARTING AREA:** IN THE VICINITY OF BAY MARK (W), PIER MARK (V) HARBOUR MARK (H) OR ZEBRA MARK (Z). THE LOCATION TO BE BROADCAST REPEATEDLY PRIOR TO THE FIRST WARNING SIGNAL ON THE DESIGNATED VHF CHANNEL.

**VHF CHANNEL:** 73

**RACE OFFICER:** CON MURPHY, IRO

**START & FINISH VESSELS:** DISPLAYING GREY DODGERS

**START & FINISH MARKS:** Starting and finishing marks may be either a rib with a flag, an inflatable candy striped conical mark, a dan buoy or similar. The inner distance mark, if laid, may be of the dan buoy type.

**COURSE MARKS:** The Chart in Appendix 4 indicates the letters/name and the approximate positions/type of mark are shown in Appendix 3.

DAY & DATE	FIRST WARNING SIGNAL	STARTING SEQUENCE	CLASS FLAG	HW DUN LAOGHAIRE
<b>THURSDAY 11<sup>TH</sup> JULY</b> 1 RACE	1425	Offshore	ICF Numeral 5	0743 3.9m
	1455	Non Spinnaker 1 Non Spinnaker 2 Classic Keelboat	ICF Numeral 1 ICF Numeral 2 ICF "K"	
<b>FRIDAY 12<sup>TH</sup> JULY</b> 1 RACE	1025	Offshore	ICF Numeral 5	0850 3.9m
	1155	Classic Keelboat	ICF "K"	
Howth to DL - Finish		Howth 17 (at Howth)		
<b>SATURDAY 13<sup>TH</sup> JULY</b> 1 RACE	1125	Offshore	ICF Numeral 5	0953 3.9m
	1155	Cruiser Class 0 Cruiser Class 1 Cruiser Class 2 Beneteau 31.7	ICF Numeral 0 ICF Numeral 1 ICF Numeral 2 ICF Numeral 9	
	1255	Classic Keelboat	ICF "K"	
<b>SUNDAY 14<sup>TH</sup> JULY</b> 1 RACE	1025	Offshore	ICF Numeral 5	1050 3.9m
	1055	Sigma 33 Non Spinnaker 1 Non Spinnaker 2 Classic Keelboat Howth 17	ICF "E" ICF Numeral 1 ICF Numeral 2 ICF "K" ICF "C"	

## C1 THE START

- 1.1 To alert boats that a sequence of races will begin soon an orange flag will be displayed with one sound signal for at least three minutes before a warning signal is displayed.
- 1.2 The starting line will be between a red and white staff or the main mast on the race committee starting vessel at the starboard end and the port-end starting mark, or a staff on a rib displaying an orange flag.
- 1.3 Boats whose warning signal has not been made shall avoid the starting area during the starting sequence for other races.
- 1.4 A boat starting later than 10 minutes after her starting signal will be scored Did Not Start without a hearing. This changes RRS A3 and A5.
- 1.5 In addition to RRS 29.1, the Race Committee will if possible, broadcast individual OCS sail numbers no earlier than one minute after the starting signal on the designated VHF channel. Failure to do so or delay or the order of the broadcast will not be grounds for a request for redress. This changes RRS 62.1(a)

**C2 COURSE**

- 2.1 The course will be decided on the day of the race and displayed on a board on the race committee starting vessel. The course will be broadcast on the designated VHF channel for the area.
- 2.2 The course will be sailed around fixed marks as shown on the chart in Appendix 4 and approximate positions in Appendix 3.
- 2.3 The race committee will broadcast the course to be sailed before the warning signal and it will be repeated at the start of each class.
- 2.4 No later than the warning signal the race committee starting vessel may display the approximate compass bearing of the first leg.

**C3 THE FINISH**

- 3.1 The finish line is between a staff/mast on the finishing vessel at the starboard end and the course side of an inflatable mark or dan buoy at the port end.
- 3.2 The finish, unless shortened, will be inside Dun Laoghaire Harbour.

**C4 SHORTENED COURSE**

- a) Courses may be shortened at a mark in accordance with RRS 32.2(a) and may be broadcast on the designated VHF Channel.
- b) Note: In the event that the Race Committee considers that conditions are not suitable to set a finish line inside Dun Laoghaire Harbour, the course may be shortened at Volvo Mark 1 (V40) or another mark of the course.

**C5 HOWTH 17****RACE TO DUN LAOGHAIRE - Fri 12th July**

The course will be displayed on the Howth Yacht Club's official notice board. The start will be off Howth pier and the finishing line shall be in Dun Laoghaire Harbour as in C3. After rounding the last mark of the course boats shall sail to the finish line inside Dun Laoghaire Harbour. Boats should listen to Channel 73 for any change of course.

**C.6 OFFSHORE CLASS ONLY – Tracker Units**

Boats shall attach a 'Yellowbrick' tracker unit supplied by the Organising Authority at registration securely to the boat's pushpit and activated for the duration of the race. Tracker units shall be deactivated after each race and before storing below decks. The unit shall be returned to the Race Office at the end of the Regatta. Boat skippers are responsible for the repair or replacement of the tracker should it be damaged or lost.

The Farr 42, WOW, a coastal class entry returns to Dun Laoghaire after a 2017 race. Pictured (looking astern) is Wow's tactician, the late Tom Power from the Dun Laoghaire Marina founder who died in June.  
Photo: Afloat







# WHERE IT ALL BEGAN

*Wishing all competitors the  
best of luck at  
Volvo Dún Laoghaire Regatta*



*Looking forward to seeing everyone  
in Cork throughout 2020 as we  
celebrate Where It All Began*

Web [www.cork300.com](http://www.cork300.com) Email [info@cork300.com](mailto:info@cork300.com) Phone **+353 21 4831023**  
Royal Cork Yacht Club, Crosshaven, Co Cork, P43 HD40. Ireland.



# APPENDIX 1

## TIDAL STREAMS- GUIDE ONLY



**LW**

Streams slack close inshore south side of bay

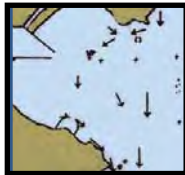


**HW**

HW: During spring tides & after Sth/Sth East gales the stream sets N.E. close to the Baily for another 1/2 hour after H.W. Dublin. Sth/Sth East winds can prolong stand of H.W. during Neap tides.



**LW+1**



**HW+1**



**LW+2**



**HW+2**



**LW+3**

Anti clockwise eddy stream west of Seapoint mark and west pier



**HW+3**

Streams are at their strongest at this point of the Ebb.



**LW+4**



**HW+4**



**LW+5**

Streams slack all over bay. Young ebb begins close into south shore of bay & North of Baily



**HW+5**

Streams slack all over bay. Young flood begins making close into South shore of bay & North of Baily

# APPENDIX 2

## CODE FLAGS

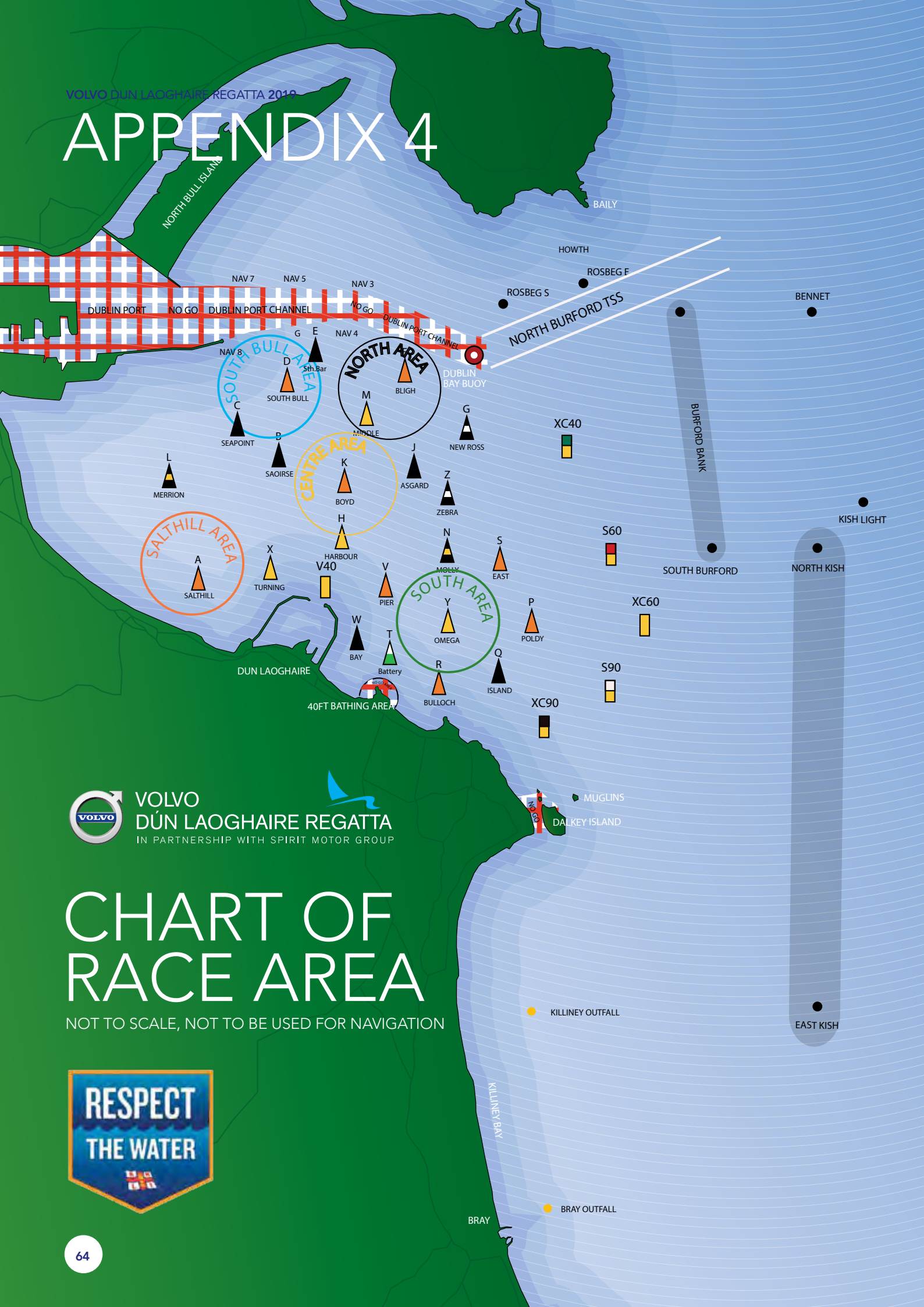
CRUISER CLASS 0	NUMERAL 0	
CRUISER CLASS 1	NUMERAL 1	
CRUISER CLASS 2	NUMERAL 2	
CRUISER CLASS 3	NUMERAL 3	
CRUISER CLASS 4	NUMERAL 4	
NON SPINNAKER 1	NUMERAL 1	
NON SPINNAKER 2	NUMERAL 2	
OFFSHORE	NUMERAL 5	
BENETEAU 31.7	NUMERAL 9	
J80	E	
SIGMA 33	E	
RUFFIAN 23	R	
SHIPMAN	W	
GLEN	K	
HOWTH 17	C	
SQUIB	G	
RS ELITE	E	
DRAGON	D	
FLYING 15	NAVAL NUMERAL 6	
SB20	J	
SEABIRD HALF RATER	F	
MERMAID	M	
IDRA 14	Q	
WATER WAG	WATER WAG BURGEE	
BENETEAU 211	A	
GP14	GP14 CLASS FLAG	
LASER STD & RADIAL	LASER CLASS FLAG	
WAYFARER	E	
420	420 CLASS FLAG	
MIXED SPORTSBOAT	3RD SUBSTITUTE	
MYTH	H	
CLASSIC KEELBOAT	K	

# APPENDIX 3

## DUBLIN BAY FIXED MARK POSITIONS (APPROX)

TYPE	LETTER	NAME	COLOUR	LAT	LONG
DBSC Racing Mark	A	SALTHILL	ORANGE	53°18.36'N	06°09.00'W
DBSC Racing Mark	B	SAOIRSE	BLACK	53°19.02'N	06°08.15'W
DBSC Racing Mark	C	SEAPOINT	BLACK	53°19.48'N	06°08.60'W
DBSC Racing Mark	D	SOUTH BULL	ORANGE	53°20.00'N	06°08.30'W
DBSC Racing Mark	E	SOUTH BAR	BLACK	53°20.22'N	06°07.45'W
DBSC Racing Mark	F	BLIGH	ORANGE	53°20.08'N	06°06.70'W
DBSC Racing Mark	G	NEW ROSS	BLACK/WHITE	53°19.60'N	06°06.30'W
DBSC Inflatable Mark	H	HARBOUR	ORANGE	53.18.56'N	06°07.40'W
DBSC Racing Mark	J	ASGARD	BLACK	53°19.11'N	06°06.56'W
DBSC Racing Mark	K	BOYD	ORANGE	53°18.85'N	06°07.37'W
DBSC Racing Mark	L	MERRION	BLACK/YELLOW	53°18.92'N	06°09.20'W
DBSC Racing Mark	M	MIDDLE	YELLOW	53°19.55'N	06°07.48'W
DBSC Racing Mark	N	MOLLY	BLACK/YELLOW	53°18.28'N	06°06.28'W
DBSC Racing Mark	P	POLDY	ORANGE	53°17.82'N	06°05.40'W
DBSC Racing Mark	Q	ISLAND	BLACK	53°17.45'N	06°05.58'W
DBSC Racing Mark	R	BULLOCH	ORANGE	53°17.28'N	06°06.16'W
DBSC Racing Mark	S	EAST	ORANGE	53°18.16'N	06°05.68'W
DBSC Racing Mark	T	BATTERY	GREEN/WHITE	53°17.46'N	06°06.68'W
DBSC Racing Mark	V	PIER	ORANGE	53°18.10'N	06°06.84'W
DBSC Racing Mark	X	TURNING	YELLOW	53°18.43'N	06°08.34'W
DBSC Racing Mark	W	BAY	BLACK	53°17.73'N	06°07.10'W
DBSC Racing Mark	Y	OMEGA	YELLOW	53°17.78'N	06°06.23'W
DBSC Inflatable Mark	Z	ZEBRA	ORANGE	53°18.74'N	06°06.16'W
CARDINAL		NORTH BURFORD	CARDINAL MARK	53°20.50'N	06°01.49'W
CARDINAL		BENNET	CARDINAL MARK	53°20.17'N	05°55.13'W
CARDINAL		SOUTH BURFORD	CARDINAL MARK	53°18.06'N	06°01.29'W
LIGHTHOUSE		KISH LIGHT	LIGHTHOUSE	53°18.65'N	05°55.42'W
OUTFALL BUOY		KILLINEY OUTFALL	YELLOW	53°14.90'N	06°05.06'W
OUTFALL BUOY		BRAY OUTFALL	YELLOW	53°13.15'N	06°04.49'W
CARDINAL		EAST KISH	LATERAL MARK	53°14.34'N	05°53.58'W
CARDINAL		NORTH KISH	LATERAL MARK	53°18.55'N	05°56.43'W
ISLAND		MUGLINS	RED WHITE LIGHT	53°16.53'N	06°04.57'W
INFLATABLE	V40	VOLVO 1	YELLOW TOPHAT	53°18.38'N	06°07.60'W
INFLATABLE	XC40	VOLVO 2	YELLOW/GREEN TOPHAT	53°19.50'N	06°04.23'W
INFLATABLE	S60	VOLVO 3	YELLOW/RED TOPHAT	53°18.38'N	06°04.20'W
INFLATABLE	XC60	VOLVO 4	YELLOW TOPHAT	53°17.85'N	06°04.55'W
INFLATABLE	S90	VOLVO 5	YELLOW/WHITE TOPHAT	53°17.41'N	06°04.66'W
INFLATABLE	XC90	VOLVO 6	YELLOW/BLACK TOPHAT	53°17.10'N	06°05.00'W

# APPENDIX 4



**VOLVO**  
DUN LAOGHAIRE REGATTA  
IN PARTNERSHIP WITH SPIRIT MOTOR GROUP

# CHART OF RACE AREA

NOT TO SCALE, NOT TO BE USED FOR NAVIGATION

