

THURSDAY JULY 10TH TO SUNDAY JULY 13TH



2025

INCORPORATING MELGES 15 EUROPEAN CHAMPIONSHIPS



# SAILING INSTRUCTIONS 2025



CELEBRATING  
DÚN LAOGHAIRE  
SAILING

REGATTA: 10-13 JULY 2025

COASTIVAL: 5-13 JULY 2025



WWW.DLREGATTA.ORG

# VOLVO DUN LAOGHAIRE REGATTA 2025

## EMERGENCY PROCEDURES AFLOAT

If an incident occurs afloat during the Volvo Dun Laoghaire Regatta the following procedure should be followed:

Go to VHF Channel 16 and Broadcast the following (announcing 3 times):

- 1) MAYDAY if boat is in distress.
  - 2) PAN PAN if boat requires outside assistance.
- In every case state:  
The nature of the incident or injury. The name and position of your boat. For other difficulties call your Course VHF channel and advise the Race Officer of your problem.

# CONTENTS

03	GENERAL INFORMATION
04	SAILING INSTRUCTIONS
	SI RACING AREA ADDENDUMS
11	BAY RACE B
12	NORTH RACING AREA
14	SOUTH RACING AREA
15	WEST RACING AREA
17	SALTHILL RACING AREA
19	OUTER BAY RACING AREA
21	HYLAND RACING AREA (MELGES 15)
25	INTRODUCTORY CRUISER CLASS
26	WHATSAPP QR CODES
27	CODE FLAG - ADDENDUM
28	FIXED MARK - ADDENDUM
29	FIXED MARK & COURSE AREA CHART

Royal Irish yacht Rockabill VI is a local entry in the 2025 Volvo Dun Laoghaire Regatta on Dublin Bay Photo: Afloat



# GENERAL INFORMATION 2025

## ORGANISING COMMITTEE

Don O'Dowd (Chairman), Con Murphy, Colin O'Brien, Brian Craig, Peter Bowring, Peter Ryan, Kate Fogarty, Paddy Boyd, Brendan Foley.

**Principal Race Officer:** Con Murphy

**Event Director:** Paddy Boyd

**Bridge Comms Centre:** Simon Coate, Philip Ferguson

**Race Office Manager:** Sandra Moore, Catriona McNally

**Results:** Ian Bowring, Dara Totterdell

## PROTEST COMMITTEE

Mike Butterfield (IJ GBR), Gordon Davies (IJ IRL), Craig Mitchell (IJ GBR)

## SUB COMMITTEE – RACING

Con Murphy (Chair), Paddy Boyd, Peter Bowring, Sandra Moore, Catriona McNally, Mal Nowlan, Ian Bowring, Eddie Totterdell, Michael Tyrrell, Ronan Adams, Mark McGibney, Olivier Prouveur, Peter Ryan, Declan Traynor, Cormac Bradley.

## MAIN PRIZE GIVING

**Sunday 13<sup>th</sup> July** - 1600 Royal St George Yacht Club

## CONTACT NUMBERS:

**DMYC** +353 1 280 1371

**NYC** +353 1 280 5725

**RIYC** +353 1 280 9452

**RSGYC** +353 1 280 1811

**RACE OFFICE:** +353 83 8192713

## BERTHING / PARKING - VISITING BOATS

Berthing or parking for visiting boats (boats not already based in Dun Laoghaire) is included in the entry fee for the duration of the Regatta, from Monday 7<sup>th</sup> July to Monday 14<sup>th</sup> July 2025. Boats shall be kept in their assigned places for the duration of the regatta. All visiting dry sailed boats and dinghies MUST vacate their allocated Club Parking by Monday 14<sup>th</sup> July 2025. If berthing is required outside the period stated above, competitors must contact the Event Director or Dun Laoghaire Marina who will advise on availability and cost.

## TEMPORARY MEMBERSHIP

The Dun Laoghaire Motor Yacht Club, the National Yacht Club, the Royal Irish Yacht Club and the Royal St George Yacht Club, represent the Volvo Dun Laoghaire Regatta Committee. All Helmsmen and their crews competing in the Regatta and volunteers assisting will be Temporary Members of the above clubs throughout the Regatta and will be bound by the Rules of those Clubs. The Clubs reserve the right to withdraw such temporary membership.

## SPECIAL NOTICES

Competitors shall keep clear of all commercial shipping entering and departing Dublin Port and cruise liner tenders operating between Dun Laoghaire and the anchorage in Dublin Bay.

## ACKNOWLEDGEMENTS

The Volvo Dun Laoghaire Regatta Committee wishes to thank Dublin Bay Sailing Club, Howth Yacht Club, Dun Laoghaire Rathdown County Council, and Marina Marketing & Management Ltd, for facilities provided and acknowledge the co-operation of Captain Michael McKenna, Dublin Port Harbour Master, Laura Jackson, Dun Laoghaire Assistant Harbour Master and Tim Ryan Dun Laoghaire Harbour Operations Manager.

Our sincere thanks to all the club personnel and volunteers and also to those who have loaned their flagships, mark boats and ribs.

We acknowledge the very generous financial assistance received from all our sponsors and patrons, but in particular our title sponsors VOLVO Car Ireland Ltd and Spirit Motor Group Ltd who make the event possible.



# SAILING INSTRUCTIONS 2025

The Organising Authority of the Volvo Dun Laoghaire Regatta is Dublin Bay Regattas Limited, a not-for-profit company which is beneficially owned by the Dun Laoghaire Motor Yacht Club (DMYC), the National Yacht Club (NYC), the Royal Irish Yacht Club (RIYC) and the Royal St George Yacht Club (RSGYC).

[DP] denotes a rule for which the penalty is at the discretion of the Jury. [NP] denotes that a breach of this rule will not be grounds for a protest by a boat. This changes RRS 60.1(a).

## 1 RULES

- 1.1 The regatta will be governed by the rules as defined in The Racing Rules of Sailing (RRS).
- 1.2 The Irish Sailing Prescriptions to the RRS 2025-2028 shall apply.
- 1.3 RRS Appendix TS Section A applies to the South Burford TSS.

## 2 CHANGES TO THE SAILING INSTRUCTIONS

- 2.1 Any change to the sailing instructions will be posted before 0930 on the day it will take effect, except any change to the scheduled times of races will be posted by 2100 on the day before it will take effect.

## 3 COMMUNICATIONS WITH COMPETITORS

- 3.1 Notices to competitors will be posted [the Official Noticeboard](#)
- 3.2 The race office is located on the Carlisle Pier, telephone 083 819 2713, email [ed@dlregatta.org](mailto:ed@dlregatta.org)
- 3.3 On the water, the race committee intends to monitor and communicate with competitors on VHF radio channels as outlined on each Racing Area addendum in these SI's.
- 3.4 If the race committee displays flag W, alternate VHF channel 08 will be used.
- 3.5 The following communications may be made by the race committee on the racing area channels: the location of the starting area, countdown to the start, recalls, uniform and black flag DSQs and postponements. Failure to make these broadcasts or failure to hear them shall not constitute grounds for redress. This changes rule 61.1a.
- 3.6 A Regatta information Group on WhatsApp will be available for all competitors. The link/Qr Code is on the WhatsApp Addendum to the SI's.
- 3.7 [NP] Coastal Class – the person in charge of each boat shall join the dedicated 'Coastal Class WhatsApp' group on registration.
- 3.8 [DP] [NP] Each boat in the Coastal Class shall attach a 'Yellowbrick' tracker unit supplied at registration securely to the boat's pushpit and activated for the duration of the race. Tracker units shall be deactivated after each race and before storing below decks. The unit shall be returned to the Race Office at the end of the Regatta. Boat Persons in Charge are responsible for the repair or replacement of the tracker should it be damaged or lost.

## 4 [DP] [NP] CODE OF CONDUCT

- 4.1 Competitors and support persons shall comply with any reasonable request from a regatta official.

## 5 SIGNALS MADE ASHORE

- 5.1 Signals made ashore will be displayed at the DMYC, the NYC, the RIYC and the RSGYC.
- 5.2 When the flag "AP" is displayed ashore, '1 minute' is replaced with 'not less than 60 minutes' in the race signal AP.
- 5.3 Adverse Weather: When flag "X" is displayed ashore over class flag(s) it will indicate that the scheduled for those classes has been changed. The start and the course will be advised on the appropriate VHF Channel. The start may be from a signal vessel or from the hut positioned on the West Pier and the course will be sailed around fixed marks as shown on the chart in SI Fixed Mark and Course Area Chart Addendum. The starts and class sequences will be published in an amendment to the Sailing Instructions not later than 90 minutes before the first start time. This changes Race Signals.

## 6 SCHEDULE OF RACES

6.1 Dates of racing are from Thursday 10<sup>th</sup> July – Sunday 13<sup>th</sup> July 2025.

6.2 The scheduled time for the warning signal for the first race each day is (\*changes the NOR):  
A competitors briefing will be held at the Royal Irish Yacht Club on Thursday 10<sup>th</sup> July at 1100.\*

### Thursday 10<sup>th</sup> July 2025

1355: The Bay Race

1455: Melges 15 Practice Race

### Friday 11<sup>th</sup> July 2025

1055: Outer Bay Area\*

1125: All Other Racing areas

### Saturday 12<sup>th</sup> July 2025

1055: Outer Bay Area\*

1125: All Other Racing areas

### Sunday 13<sup>th</sup> July 2025

1025: Outer Bay Area\*

1055: All Other Racing areas

6.3 Racing areas, Groups of Classes, Signal Vessels and Marks may be changed or substituted by the Race Committee.

6.4 To alert boats that a race or sequence of races will begin soon, the orange starting line flag will be displayed with one sound at least five minutes before a warning signal is made.

6.5 On the last day of the regatta no first warning signal for a race will be made after 13:55.

Classes	Thurs 10th July	Fri 11th July	Sat 12th July	Sun 13th July
Coastal	Bay Race (Group 1)	Outer Bay (1)	Outer Bay (1)	Outer Bay (1)
Cruiser Class 0		North (2)	North (2)	Outer Bay (1)
Cruiser Class 1				
Cruiser Class 2				
Beneteau 31.7				South(1)
Sigma 33				
Non Spinnaker Perf & Club A		South (2)	Outer Bay (1)	
Non Spinnaker Club B	Bay Race (Group 2)			
Cruiser Class 3			South (2)	West (1)
Ruffian & Shipman				
Beneteau 211				
Glen & DB21 & Howth 17				
Dragon		West (3)	West (3)	North (1)
SB20				
J80 & Mixed Sportsboat				
Flying Fifteen				
Mermaid		Salthill (3)	Salthill (3)	Salthill (2)
Fireball	No Race			
ILCA 6 & 7	No Race			
IDRA 14 & Wayfarer	No Race			
Water Wag	No Race			
Melges 15	(Practice Race)	Hyland (3)	Hyland (4)	Hyland (2)
Introductory Cruiser	No Race	West Pier Hut(1)	West Pier Hut(1)	West Pier Hut(1)

## 7. CLASS FLAGS

- 7.1. Class flags will be as indicated in the relevant SI Racing Area Addendum and the SI Code Flags Addendum.
- 7.2. **[DP] [NP]** Class flags shall be clearly displayed from the backstay of Cruiser Class 0, Class 1, Class 2, Class 3, Coastal, Non Spinnaker Performance, Non Spinnaker Club A & Non Spinnaker Club B and Mixed Sportsboat Class throughout the regatta, and shall be a minimum size of 6" in the hoist for flags and 12" in the fly for numeral pennants.

## 8. RACING AREAS

- 8.1. SI Racing Area Addenda show the approximate location & colour of racing areas, fixed racing marks and obstructions.
- 8.2. Classes will be assigned to racing areas as stated in SI 6.6

## 9. COURSES

- 9.1. The diagrams in SI Racing Area Addenda show the courses, including the approximate angles between legs, the order in which marks are to be passed, and the side on which each mark is to be left.
- 9.2. SI Fixed Mark Addendum shows the approximate positions/identifying names and the letters of the marks which will be broadcast when setting Outer Bay, South, Introductory or Fixed Mark courses.

## 10. MARKS

- 10.1. Start & finish flagships & marks:

Flagship's Dodger Colour	Course Marks
<b>Bay Race</b>	DBSC Marks, Volvo Blue/Black inflatable & Shipping Navigation Marks
<b>Salthill</b>	Orange tetrahedral inflatable
<b>West</b>	Yellow or Yellow with Black Band cylindrical inflatable
<b>Hyland</b>	Orange cylindrical inflatable
<b>North</b>	Black or Black with White Band cylindrical inflatable
<b>South</b>	DBSC Marks, Volvo Blue inflatable & Shipping Navigation Marks
<b>Outer Bay</b>	DBSC Marks, Volvo Blue inflatable & Shipping Navigation Marks

- 10.2. The starting and finishing marks are described in the SI Racing Area Addenda.
- 10.3. If a gate mark is missing and has not been substituted in accordance with RRS 34, the remaining mark shall be left to port.
- 10.4. Offset Mark: while every effort will be made to lay the offset mark (O), in the event that this is not possible, boats shall, after rounding the windward mark to port, sail directly to the leeward gate.
- 11. [DP] OBSTRUCTIONS** (as shown in SI Fixed Mark and Course Area Chart Addendum)
- 11.1. While racing, all boats are prohibited from entering the following NO GO areas:
- (a) Dublin Port: the area bounded by the following: Poolbeg Lighthouse, navigation marks 8, 6, 4, Dublin Bay Buoy, navigation marks 1, 3, 5, 7 and North Bull Lighthouse as shown in Addendum
- (b) Dalkey Sound as shown in Addendum
- (c) Bathing Areas: at Dun Laoghaire Baths, Sandycove/40FT, Seapoint and Killiney marked by small yellow conical buoys. No boat shall sail inside these buoys.

**12. THE START**

- 12.1 Refer to the SI Racing Area Addenda.
- 12.2 [DP] Boats whose warning signal has not been made shall avoid the starting area during the starting sequence for other races.
- 12.3 If any part of a boat's hull is on the course side of the starting line at her starting signal and she is identified, the race committee may attempt to call her sail number on VHF (not applicable on the Salthill area). A boat may not request redress based on failure of the race committee to call her number, failure of her to hear such a call, or the order in which boats are called. This changes RRS 61.1(a).
- 12.4 A boat that does not start within 5 minutes (Bay Race 10 minutes) after her starting signal will be scored Did Not Start without a hearing. This changes RRS A5.

**13. CHANGE OF THE NEXT LEG OF THE COURSE**

- 13.1 To change the next leg of the course, the race committee will move the original mark or the finishing line to a new position.
- 13.2 Minor adjustments may be made to the course without indicating a course change. This changes RRS 33.

**14. THE FINISH**

- 14.1 Refer to the SI Racing Area Addenda.

**15. PENALTY SYSTEM**

- 15.1 RRS 44.1 is changed so that boats in all classes except Flying Fifteens and dinghies need only take a one-turn penalty if they may have broken one or more rules of Part 2 in an incident while racing.

**16. TIME LIMITS**

- 16.1 ONE DESIGN KEELBOATS & DINGHIES: Boats will be timed up to 15 minutes after the first boat of their class sails the course and finishes; otherwise, they will be scored Did Not Finish. This changes RRS 35, A5.1 and A5.2.
- 16.2 CRUISER CLASSES 0,1,2,3, Non Spinnaker Classes and Mixed Sportsboat classes: Boats will be timed up to 30 minutes after the second boat of their class sails the course and finishes; otherwise, they will be scored Did Not Finish. (Note - when racing on the Outer Bay area, Section 16.3 applies). This changes RRS 35, A5.1 and A5.2.
- 16.3 OUTER BAY: The time limit for Friday 11th and Saturday 12th July will be 1700 and Sunday 13th July 1500. This changes RRS 35 and A5.1 and A5.2.
- 16.4 BAY RACE: The time limit for the Bay Race on Thursday 10<sup>th</sup> will be 1900. This changes RRS 35 and A5.1 and A5.2.
- 16.5 MELGES 15 – see Addendum Hyland Area

**17. HEARING REQUESTS**

- 17.1 Hearing requests shall be submitted by using the online system available [here](#)
- 17.2 For each racing area, the protest time limit is 90 minutes after the last boat has finished the last race of the day, (60 minutes on the last day of the regatta) or the signal No more racing today is made afloat, whichever is later. However, the protest time limit is 30 minutes after the signal No more racing today is made ashore.
- 17.3 Notices will be published on [the Official Noticeboard](#) no later than 30 minutes after the protest time limit to inform boats of hearings in which they are parties or named as witnesses. Hearings may be scheduled to begin before the end of protest time. Hearings will be held beginning at the time and location published on the official notice board.
- 17.4 RRS Appendix T, Arbitration, applies. A boat takes a Post-Race Penalty by completing a Post-Race Penalty Declaration Form and delivering it to the Race Office. This changes RRS T1(c).
- 17.5 When a Post-Race Penalty is accepted:
  - (a) Neither boat nor a protest committee may then revoke or remove the penalty.
  - (b) The boat shall not be penalized further in a protest hearing when the protest committee decided that it was appropriate to the facts found and the applicable rules.

**18. SCORING**

- 18.1 One race is required to be completed to constitute a series.
- 18.2 When fewer than four races have been completed, a boat's series score will be the total of her race scores.
- 18.3 When four or more races have been completed, a boat's series score will be the total of her race scores, excluding her worst score.
- 18.4 Results will be posted on the event results site.
- 18.5 Results of the Bay Race will not be included in the scoring of the Flying Fifteen East Coast Championships.

**19. [DP][NP] SAFETY REGULATIONS**

- 19.1 Boats not leaving the harbour for a scheduled race shall promptly notify the Race Office.
- 19.2 All keelboats shall have on board an operating VHF radio.
- 19.3 All boats shall comply with their Class Safety Regulations and Cruiser Classes shall also comply with NOR 13.2 CRUISER CLASSES – EQUIPMENT with the following amendment: The last sentence of Appendix B of the Special Regulations for Inshore Racing section 5.01.1 is deleted. Competitors attention is drawn to RRS 1.2
- 19.4 A boat that retires from a race shall notify the race committee at the first reasonable opportunity.
- 19.5 The wearing of personal flotation devices is mandatory when afloat for all dinghy classes and strongly recommended for all other classes.
- 19.6 [DP} Cruiser Classes – boats should not race with their anchors in the bow position.
- 19.7 In case of a critical weather situation, the race committee in that area will display N over H or A and all boats should return to the harbour in the safest way.
- 19.8 In the event of an incident that involves personal injury or severe illness, or where the boat is in danger and needs assistance, crews should contact their race committee on the Racing Area VHF channel and as necessary Dublin Coastguard on VHF Channel 16 (or by telephone via 999). The Race Committee and Coastguard will then initiate the appropriate action.
- 19.9 The emergency landing point is the pontoon on the east side of the Carlisle Pier.
- 19.10 First Aid Facilities are located at the race office on the Carlisle Pier. The telephone number of the race office is 083 819 2713.

**20. [DP] EQUIPMENT AND MEASUREMENT CHECKS**

- 20.1 A boat or equipment may be inspected at any time for compliance with the class rules, notice of race and sailing instructions.

**21. TRASH DISPOSAL**

- 21.1 Dinghies may place trash aboard official vessels.

**22. PRIZES**

- (a) Overall first, second and third prize will be awarded for the series for each class with ten or more entrants.
- (b) Overall first and second prize will be awarded for the series for each class with seven to nine entrants.
- (c) Overall first will be awarded for the series for each class with six or less entrants.
- 22.2 Daily prizes will be presented to first in each class at the end of Thursday, Friday and Saturday. A winner can only receive one daily prize.
- 22.3 There will be additional prizes for the Bay Race line honours and overall on handicap. These will be presented at the Daily Prizegiving on Thursday 10<sup>th</sup> July.
- 22.4 For the purpose of prizes, the Coastal Class will be scored as a single fleet and also for boats with an TCC 1.020 or more (Subdivision A) and a TCC less than 1.020 (Sub-division B). No day prizes will be presented for these two sub-divisions.



22.5 Prizegiving will be held each day after racing as follows\*:

Dates	Times	Location
Thurs 10 July	1900	RIYC – Daily Prizegiving
Fri 11 July	1900	NYC - Daily Prizegiving
Sat 12 July	1900	DMYC - Daily Prizegiving
Sun 13 July	1600	RSGYC Overall Event Prizegiving

\*This changes the NOR

## 22.6 Perpetual Trophies

Awarded to	Trophy Name
Best Visiting Boat	Salamander Trophy presented by Royal Dee Yacht Club
Best Dinghy/Small Keelboat	National Yacht Club Darthula Trophy
Best One Design Keelboat	Royal Irish Yacht Club HM Naval Base Trophy
Best Overall IRC	The Volvo Trophy
Boat of the Week	The Dubarry Shamrock Trophy
Royal Dee Irish Sea Offshore Championship	Royal Dee Yacht Club Trophy
Outer Bay Class Challenge Trophy	Sealink Trophy
Best Dublin Bay Sailing Club Non Spinnaker ECHO	Dun Laoghaire Regatta Open Championship Trophy
Best Overall ECHO	Royal Irish Yacht Club Perpetual Trophy
Best Overall Ruffian 23	Dun Laoghaire Motor Yacht Club Perpetual Trophy
Best Overall IDRA 14	Dun Laoghaire Motor Yacht Club Perpetual Trophy
Best Overall Flying 15	National Yacht Club Perpetual Trophy
Most Successful RSGYC Boat	Royal St George Yacht Club - Royal Kingstown Yacht Club Trophy
Most Successful Classic Yacht	Kingstown 200 Trophy
Most Successful Water Wag	Collen Cup presented by Pamela Collen
Melges 15 European Champion	Hyland Trophy



IRC yachts competing in the 2023 Volvo Dun Laoghaire Regatta on Dublin Bay Photo: Afloat

## 23. RISK STATEMENT

- 23.1 RRS 3 states: 'The responsibility for a boat's decision to participate in a race or to continue to race is hers alone.' By participating in this event each competitor agrees and acknowledges that sailing is a potentially dangerous activity with inherent risks. These risks include strong winds and rough seas, sudden changes in weather, failure of equipment, boat handling errors, poor seamanship by other boats, loss of balance on an unstable platform and fatigue resulting in increased risk of injury. Inherent in the sport of sailing is the risk of permanent, catastrophic injury or death by drowning, trauma, hypothermia or other causes.
- 23.2 The decision with regard to starting and continuing to race lies exclusively with the Person in Charge of each boat, who is at all times personally responsible for the safety of the boat and its crew. Neither the Organising Authority, DMYC, NYC, RIYC, RSGYC, Sponsors and Stakeholders who include Dublin Port Company and Dun Laoghaire Rathdown County Council nor any of their officers/committees/representatives will accept any liability for material damage or personal injury or death sustained in conjunction with or prior to, during, or after the Regatta.

## 24. INSURANCE

Each participating boat shall be insured with valid third-party liability insurance with a minimum cover of €3,000,000 per event or the equivalent.



# ADDENDUM - BAY RACE (B)

## THURSDAY 10<sup>TH</sup> JULY 2025

**STARTING AREA:** IN THE VICINITY OF DUN LAOGHAIRE HARBOUR

**VHF CHANNEL:** 74

**RACE OFFICER:** CON MURPHY, IRO

**START AND FINISH VESSEL:** YACHT CONCERTO (WHITE DUFOUR 455)

**START AND FINISH MARKS:** DBSC FLAGSHIP CORINTHIAN

**COURSE MARKS:** The Chart in SI Fixed Mark and Course Area Chart Addendum indicates the letters/name and the approximate positions/type of marks are shown in the Fixed Mark Addendum.

DAY & DATE	FIRST WARNING SIGNAL	STARTING SEQUENCE	CLASS FLAG	HW DUN LAOGHAIRE
<b>THURSDAY 10<sup>TH</sup> JULY</b> 1 RACE	1355	<b>Group 1</b> Coastal Class, Cruiser Class 0, Cruiser Class 1, Cruiser Class 2, Non Spinnaker Performance, Non Spinnaker Club A, Beneteau 31.7, Sigma 33	ICF Numeral 1	12.26 3.7m
	1405	<b>Group 2</b> Cruiser Class 3, Non Spinnaker Club B, Glen, DB21, Howth 17, Ruffian, Shipman, Dragon, SB20, J80, Mixed Sportsboat, Flying Fifteen, Beneteau 211, Mermaid	ICF Numeral 2	

### B1 THE START

- 1.1 The starting line will be between the red and white staffs of committee boats at the port end and the starboard end.

### B2 COURSE

- 2.1 The course(s) will be announced on the day of the race and communicated via the Regatta WhatsApp Information group and repeated on the designated VHF channel before the start(s).
- 2.2 The course will be sailed around marks as shown on the chart in SI Fixed Mark and Course Area Chart Addendum and approximate positions in SI Fixed Mark Addendum.

### B3 THE FINISH

- 3.1 The finish, unless shortened as in B4, will be between the red and white staff of committee boats displaying blue flags in the vicinity of Dun Laoghaire Harbour.

### B4 SHORTENED COURSE

- 4.1 Courses may be shortened at a mark and may be broadcast on the designated VHF Channel. The changes RRS 32.2(a)

# ADDENDUM - NORTH RACING AREA (N)

## WINDWARD/LEEWARD or FIXED MARKS

**STARTING AREA:** IN THE VICINITY OF NEW ROSS MARK (G) (APPROX 53°19.60'N & 06°06.48'W)

**VHF CHANNEL:** 77

**RACE OFFICER:** DAVID LOVEGROVE, IRO

**START VESSEL:** HYC 'NORTHSTAR' DISPLAYING BLACK DODGERS

**FINISH VESSEL:** MOTORBOAT 'ARGENTOR' DISPLAYING BLACK DODGERS

**START & FINISH MARKS:** Starting and finishing marks may be either a rib with a flag, a mark, a dan buoy or similar. The inner distance mark, if laid, may be of the dan buoy type.

**WINDWARD/LEEWARD MARKS:** The course marks will be black inflatable marks. The inner windward mark (course B) will be a black inflatable mark with a white band.

**FIXED MARK:** The Chart in SI Fixed Mark and Course Area Chart Addendum indicates the letters of the fixed marks and the approximate positions are shown in SI Fixed Mark Addendum.

DAY & DATE	FIRST WARNING SIGNAL	STARTING SEQUENCE	CLASS FLAG	2025 (BST) HW DUN LAOGHAIRE
<b>FRIDAY 11<sup>TH</sup></b> JULY 2 RACES	1125	Cruiser Class 0 Cruiser Class 1 Cruiser Class 2 Beneteau 31.7 Sigma 33	ICF Numeral 0 ICF Numeral 1 ICF Numeral 2 ICF Numeral 9 ICF "E"	13.02 3.8m
<b>SATURDAY 12<sup>TH</sup></b> JULY 2 RACES	1125	Cruiser Class 0 Cruiser Class 1 Cruiser Class 2 Beneteau 31.7 Sigma 33	ICF Numeral 0 ICF Numeral 1 ICF Numeral 2 ICF Numeral 9 ICF "E"	13.38 3.9m
<b>SUNDAY 13<sup>TH</sup></b> JULY 1 RACE	1055	Flying Fifteen Dragon SB20 J80 & Mixed Sportsboat	Naval Numeral 6 ICF "D" ICF "J" ICF "E" & ICF 3rd Sub	14.16 3.9m

### N1 THE START

- 1.1 The starting line will be between the red and white staff or the main mast on the race committee starting vessel at the starboard end and the port-end starting mark, or a staff on a rib displaying an orange flag.

### N2 COURSE

- 2.1 Course A and Course B will be Windward/Leeward courses shown in the course diagrams with two windward marks A and B. No offset mark will be set for windward mark B.
- 2.2 The diagrams show the order in which marks are to be rounded or passed, the side on which each mark is to be left and the number of rounds.
- 2.3 The course to be sailed will be signaled by displaying a board with the course type, A or B, followed by a board displaying the number of rounds to be sailed.
- 2.4 The boards will be displayed on the race committee starting vessel from approximately 4 minutes before the start of each class to approximately 1 minute after the start of each class and it may be broadcast on the designated VHF channel. This changes RRS 27.1.
- 2.5 No later than the warning signal the race committee starting vessel may display the approximate compass bearing of the first leg.

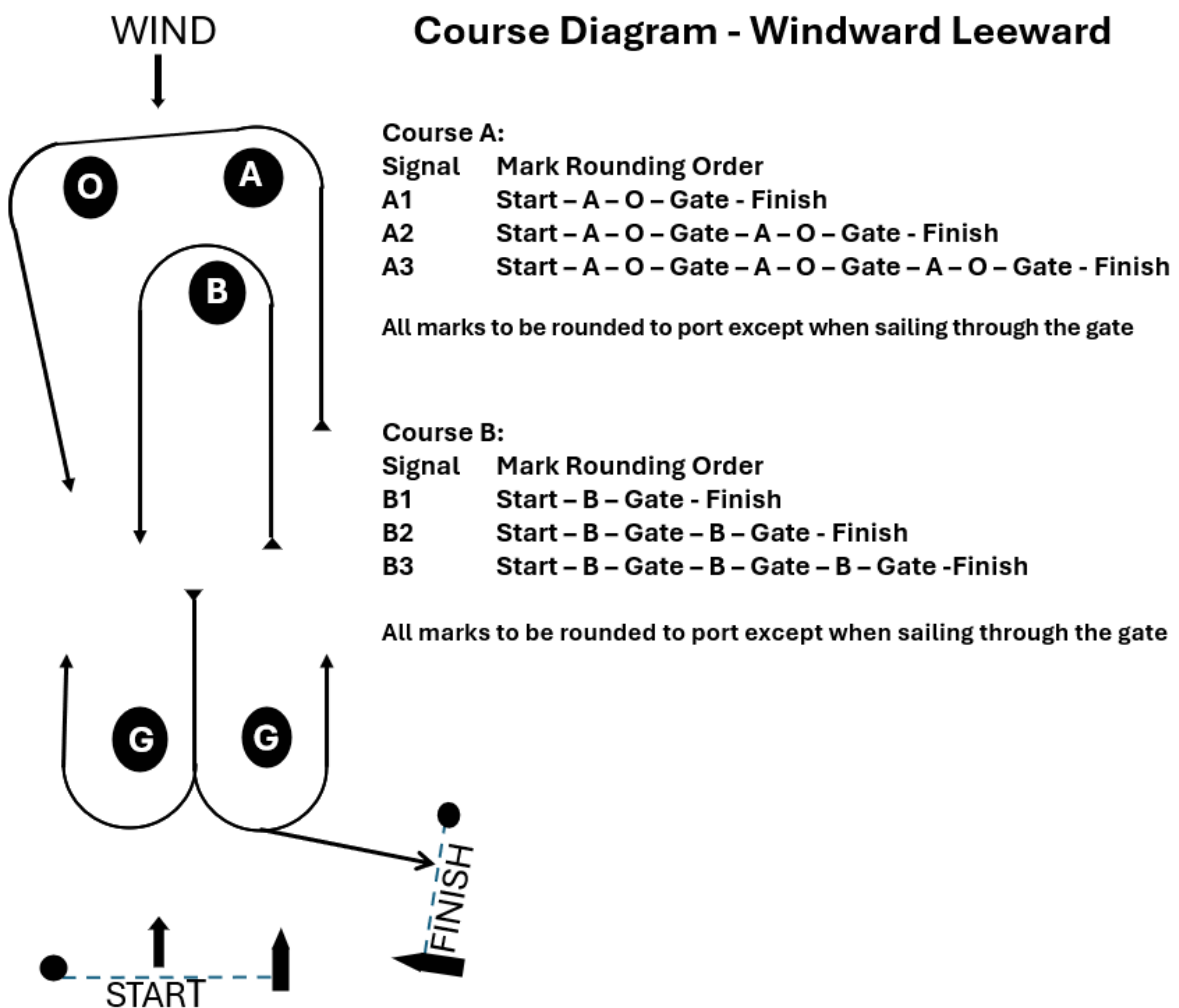


### N3 THE FINISH

- 3.1 The finish line will be between a staff/mast on the finishing vessel at the starboard end and an inflatable mark or dan buoy at the port end.

### N4 FIXED MARK COURSE

- 4.1 When Flag "F" is displayed a fixed mark course will be set.
- 4.2 The course will be sailed around fixed marks as shown on the chart in SI Fixed Mark Addendum.
- 4.3 The order in which the marks are to be rounded or passed and the required side will be broadcast on the designated VHF Channel and will be displayed on a board on the race committee starting vessel.
- 4.4 The Race Committee will broadcast the course to be sailed before the warning signal and it will be repeated before the start of each class.
- 4.5 The finish will be at the last mark of the course or at a finish line that will be to windward of the last mark of the course.



# ADDENDUM - SOUTH RACING AREA (S)

## FIXED MARK COURSE

**STARTING AREA:** IN THE VICINITY OF OMEGA MARK (Y) (Approx 53° 17.78'N & 06° 06.23'W)

**VHF CHANNEL:** 72

**RACE OFFICER:** MICHAEL TYRRELL, IRO

**START VESSEL:** RIYC FLAGSHIP "SPIRIT OF THE IRISH" DISPLAYING GREY DODGERS

**FINISH VESSEL:** VESSEL DISPLAYING GREY DODGERS

**START & FINISH MARKS:** Starting and finishing marks may be either a rib with a flag, a mark, a dan buoy or similar. The inner distance mark, if laid, may be of the dan buoy type.

**COURSE MARKS:** The Chart in SI Fixed Mark and Course Area Chart Addendum indicates the letters/name and the approximate positions/type of mark are shown in SI Fixed Mark Addendum.

DAY & DATE	FIRST WARNING SIGNAL	STARTING SEQUENCE	CLASS FLAG	2025 (BST) HW DUN LAOGHAIRE
<b>FRIDAY 11<sup>TH</sup> JULY</b> 2 RACES	1125	Non Spinnaker Perf & Club A Non Spinnaker Club B Cruiser Class 3 Shipman & Ruffian Beneteau 211 Glen & DB21 & Howth 17	ICF Numeral 0 & 1 ICF Numeral 2 ICF Numeral 3 ICF "W" & ICF "R" ICF Numeral 9 ICFs "K" & "H" & "E"	13.02 3.8m
<b>SATURDAY 12<sup>TH</sup> JULY</b> 2 RACES	1125	Cruiser Class 3 Shipman & Ruffian Beneteau 211 Glen & DB21 & Howth 17	ICF Numeral 3 ICF "W" & ICF "R" ICF Numeral 9 ICF "K" & "H" & "E"	13.38 3.9m
<b>SUNDAY 13<sup>TH</sup> JULY</b> 1 RACE	1055	Beneteau 31.7 Sigma 33 Non Spinnaker Perf & Club A Non Spinnaker Club B	ICF Numeral 9 ICF "E" ICF Numeral 0 & 1 ICF Numeral 2	14.16 3.9m

### S1 THE START

- 1.1 The starting line will be between the red and white staff or the main mast on the race committee starting vessel at the starboard end and the port-end starting mark or a staff on a rib displaying an orange flag.

### S2 COURSE

- 2.1 The course will be decided on the day of the race and displayed on a board on the race committee starting vessel. The course will be broadcast on the designated VHF channel for the area.
- 2.2 The course will be sailed around fixed marks as shown on the chart in SI Fixed Mark and Course Area Chart Addendum and approximate positions in SI Fixed Mark Addendum.
- 2.3 The race committee will broadcast the course to be sailed before the warning signal and it will be repeated before the start of each class.

### S3 THE FINISH

- 3.1 The finish line is between a staff/mast on the finishing vessel at the starboard end and an inflatable mark or dan buoy at the port end.
- 3.2 The finish will be at a finish line to windward of the last mark of the course.

# ADDENDUM - WEST RACING AREA (W)

## WINDWARD/LEEWARD

**STARTING AREA:** IN THE VICINITY OF SEAPOINT MARK (C) (APPROX 53° 19.48'N & 06° 08.60'W)

**VHF CHANNEL:** 74

**RACE OFFICER:** EDDIE TOTTERDELL, IRO

**START VESSEL:** DBSC FLAGSHIP "CORINTHIAN" DISPLAYING YELLOW DODGERS

**FINISH VESSEL:** RSGYC FLAGSHIP "PEGASUS" DISPLAYING YELLOW DODGERS

**START & FINISH MARKS:** Starting and finishing marks may be either a rib with a flag, a mark, a dan buoy or similar. The inner distance mark, if laid, may be of the dan buoy type.

**WINDWARD/LEEWARD MARKS:** The course marks will be yellow inflatable marks. The inner windward mark (course B) will be a yellow inflatable mark with a white band.

DAY & DATE	FIRST WARNING SIGNAL	STARTING SEQUENCE	CLASS FLAG	2025 (BST) HW DUN LAOGHAIRE
<b>FRIDAY 11<sup>TH</sup></b> JULY 3 RACES	1125	Flying Fifteen Dragon SB20 J80 & Mixed Sportsboat	Naval Numeral 6 ICF "D" ICF "J" ICF "E" & ICF 3 <sup>rd</sup> Substitute	13.02 3.8m
<b>SATURDAY 12<sup>TH</sup></b> JULY 3 RACES	1125	Flying Fifteen Dragon SB20 J80 & Mixed Sportsboat	Naval Numeral 6 ICF "D" ICF "J" ICF "E" & ICF 3 <sup>rd</sup> Substitute	13.38 3.9m
<b>SUNDAY 13<sup>TH</sup></b> JULY 1 RACE	1055	Cruiser Class 3 Ruffian 23 & Shipman Beneteau 211 Glen & DB 21 & Howth 17	ICF Numeral 3 ICF "R" & ICF "W" ICF Numeral 9 ICFs "K" & "H" & "E"	14.16 3.9m

### W1 THE START

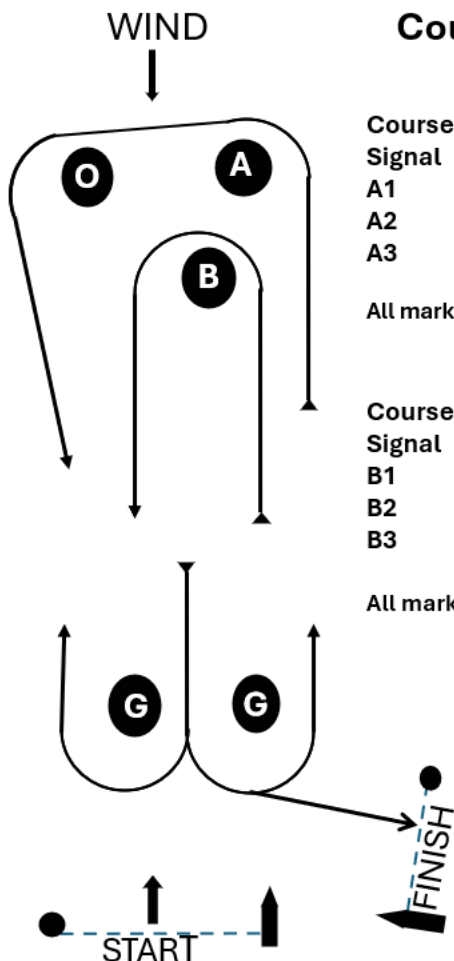
- 1.1 The starting line will be between a red and white staff or the main mast on the signal vessel at the starboard end and the port-end starting mark, or a staff on a rib displaying an orange flag.

### W2 COURSES

- 2.1 The course will be a Windward Leeward course shown in the course diagram with two windward marks A and B. No offset mark will be set for windward mark B.
- 2.2 The diagram shows the order in which marks are to be rounded or passed, the side on which each mark is to be left and the number of rounds.
- 2.3 The course to be sailed will be signaled by displaying a board with the course type, A or B, followed by a board displaying the number of rounds to be sailed.
- 2.4 The boards will be displayed on the race committee starting vessel from approximately 4 minutes before the start of each class to approximately 1 minute after the start of each class and it may be broadcast on the designated VHF channel. This changes RRS 27.1.
- 2.5 No later than the warning signal the race committee starting vessel may display the approximate compass bearing of the first leg.

### W3 THE FINISH

- 3.1 The finish line will be between a staff/mast on the finishing vessel at the starboard end and an inflatable mark or dan buoy at the port end.



### Course Diagram - Windward Leeward

#### Course A:

Signal	Mark Rounding Order
A1	Start - A - O - Gate - Finish
A2	Start - A - O - Gate - A - O - Gate - Finish
A3	Start - A - O - Gate - A - O - Gate - A - O - Gate - Finish

All marks to be rounded to port except when sailing through the gate

#### Course B:

Signal	Mark Rounding Order
B1	Start - B - Gate - Finish
B2	Start - B - Gate - B - Gate - Finish
B3	Start - B - Gate - B - Gate - B - Gate - Finish

All marks to be rounded to port except when sailing through the gate



National Yacht Club Commodore Peter Sherry competes in the Flying Fifteen class of the 2025 Volvo Dun Laoghaire Regatta on Dublin Bay  
Photo: Michael Chester



# ADDENDUM - SALTHILL RACING AREA (SH) WINDWARD/LEEWARD TRIANGLE

**STARTING AREA:** IN THE VICINITY OF SALTHILL MARK (A) (APPROX 53° 18.36'N & 06° 09.00'W)

**VHF CHANNEL:** 71

**RACE OFFICERS:** DAVID WILKINS, IRO

**START VESSEL:** YACHT CONCERTO (WHITE DUFOUR 455) DISPLAYING ORANGE DODGERS

**FINISH VESSEL:** DMYC FLAGSHIP 'GOOSE' DISPLAYING ORANGE DODGERS

**START & FINISH MARKS:** Starting and finishing marks may be either a rib with a flag, a mark, a dan buoy or similar. The inner distance mark, if laid, may be of the dan buoy type.

**COURSE MARKS:** The course marks will be orange tetrahedral inflatable marks.

DAY & DATE	FIRST WARNING SIGNAL	STARTING SEQUENCE	CLASS FLAG	HW DUN LAOGHAIRE
<b>FRIDAY 11<sup>TH</sup> JULY</b> 3 RACES	1125	Fireball Mermaid IDRA 14 & Wayfarer ILCA 7 & 6 Water Wag	ICF "F" ICF "M" ICF "Q" & ICF "E" ILCA Class Flag ICF Numeral 4	13.02 3.8m
<b>SATURDAY 12<sup>TH</sup> JULY</b> 3 RACES	1125	Fireball Mermaid IDRA 14 & Wayfarer ILCA 7 & 6 Water Wag	ICF "F" ICF "M" ICF "Q" & ICF "E" ILCA Class Flag ICF Numeral 4	13.38 3.9m
<b>SUNDAY 13<sup>TH</sup> JULY</b> 2 RACES	1055	Fireball Mermaid IDRA 14 & Wayfarer ILCA 7 & 6 Water Wag	ICF "F" ICF "M" ICF "Q" & ICF "E" ILCA Class Flag ICF Numeral 4	14.16 3.9m

## SH1 THE START

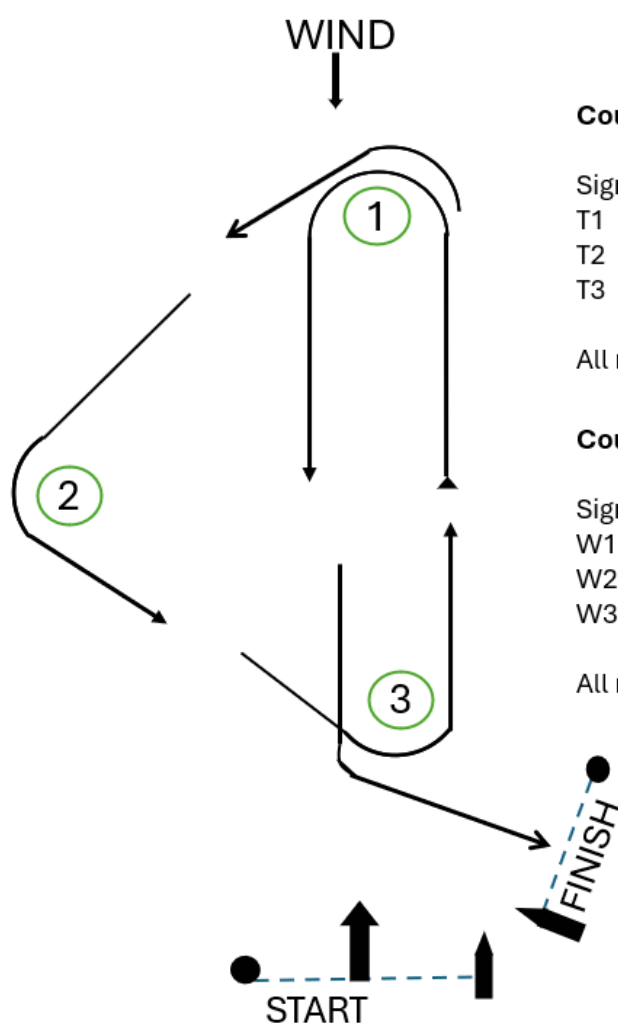
- 1.1 The starting line will be between a red and white staff or the main mast on the race committee starting vessel at the starboard end and the port-end starting mark, or a staff on a rib displaying an orange flag.

## SH2 COURSES

- 2.1 Board 'W' with numeral board will indicate Windward Leeward course and number of rounds.  
Board 'T' with numeral board will indicate Windward Leeward Triangle and number of rounds.
- 2.2 The letter and number boards will be shown on the race committee starting vessel from approximately 4 minutes before the start of each class to approximately 1 minute after the start of each class.
- 2.3 The Diagram 1 show the courses, including the course signals, the order in which marks are to be rounded or passed, and the side on which each mark is to be left.

## SH3 THE FINISH

- 3.1 The finish line will be between a staff/mast on the finishing vessel at the starboard end and n inflatable mark or dan buoy at the port end.



### Course T: Triangle – Windward - Leeward

Signal Mark Rounding Order

T1 Start – 1 – 2 – 3 - Finish

T2 Start – 1 – 2 – 3 – 1 – 3 - Finish

T3 Start – 1 – 2 – 3 – 1 – 3 – 1 – 2 – 3 - Finish

All marks to be rounded to port

### Course W: Windward - Leeward

Signal Mark Rounding Order

W1 Start – 1 – 3 - Finish

W2 Start – 1 – 3 – 1 – 3 - Finish

W3 Start – 1 – 3 – 1 – 3 – 1 – 3 - Finish

All marks to be rounded to port

The Water Wag class will compete on the Salthill Race area of the 2025 Volvo Dun Laoghaire Regatta on Dublin Bay  
Photo: Afloat



# ADDENDUM - OUTER BAY RACING AREA (C)

**STARTING AREA:** IN THE VICINITY OF OMEGA (Y) (Approx 53° 17.78N & 06° 06.23'W)

**VHF CHANNEL:** 73

**RACE OFFICER:** MICHAEL TYRRELL, IRO

**START VESSEL:** RIYC FLAGSHIP 'SPIRIT of the IRISH' DISPLAYING GREY DODGERS

**FINISH VESSEL:** -VESSEL DISPLAYING GREY DODGERS

**START MARK:** In the vicinity of OMEGA (Y) **FINISH MARKS:** Refer to Section C4

**COURSE MARKS:** The Chart in SI Fixed Mark and Course Area Chart Addendum indicates the letters/name and the approximate positions/type of mark are shown in SI Fixed Mark Addendum.

DAY & DATE	FIRST WARNING SIGNAL	STARTING SEQUENCE	CLASS FLAG	HW DUN LAOGHAIRE
<b>FRIDAY</b> 11 <sup>TH</sup> JULY 1 RACE	1055	Coastal Class	ICF Numeral 5	13.02 3.8m
<b>SATURDAY</b> 12 <sup>TH</sup> JULY 1 RACE	1055	Coastal Class Non Spinnaker Perf & Club A Non Spinnaker Club B	ICF Numeral 5 ICF Numeral 0 & 1 ICF Numeral 2	13.38 3.9m
<b>SUNDAY</b> 13 <sup>TH</sup> JULY 1 RACE	1025	Coastal Class Cruiser Class 0 Cruiser Class 1 Cruiser Class 2	ICF Numeral 5 ICF Numeral 0 ICF Numeral 1 ICF Numeral 2	14.16 3.9m

## C1 THE START

- 1.1 The starting line will be between a red and white staff or the main mast on the race committee starting vessel and Omega Mark or a staff on a rib displaying an orange flag.

## C2 COURSE

- 2.1 The course will be decided on the day of the race.
- 2.2 The Race Committee will also broadcast the course on the designated VHF channel for the area before the warning signal.
  - 2.2.1 Coastal Class:- The course for the Coastal Class will also be communicated via the Coastal Class WhatsApp group.
  - 2.2.2 Non-Spinnaker and Cruiser Classes:- The course(s) for the Non-Spinnaker and Cruiser Classes will be communicated via the Regatta Information WhatsApp Group.
- 2.3 The course will be sailed around fixed marks as shown on the chart in SI Fixed Mark and Course Area Chart Addendum and approximate positions in SI Fixed Mark Addendum.

## C3 VIRTUAL MARKS (Coastal Class only)

- 3.1 Waypoints may in exceptional circumstances be used as marks per RRS Appendix WP.
- 3.2 Evidence of rounding the "virtual" mark must be taken and may be requested by the Race Officer. This evidence may include:
  - (a) Photographic (iPhone or similar) evidence of the yacht's GPS showing its position at the mark.
  - (b) Yacht's chart plotter track showing the yacht rounding the "virtual" mark.
- 3.3 The onus of proof of having rounded the waypoint mark will be with each yacht.

**C4 THE FINISH****4.1 COASTAL CLASS FINISH**

- 4.1.1 Coastal Class - The finish, unless shortened as in C5, will be a line due south of the published co-ordinates of Bay Mark (V). This changes RRS Signals.
- 4.1.2 Coastal Class - the finishing time shall be taken from the Yellowbrick tracker system. Each boat shall also record her finishing time in hours, minutes and seconds together with the names, and approximate finishing times of the boats immediately ahead and astern. This time shall be posted on the Coastal WhatsApp group and shall apply subject to verification by the Race Committee.

**4.2 CRUISER 0, 1, 2, NON-SPINNAKER FINISH**

- 4.2.1 The finish will be between between a staff/mast on the finishing vessel at the port end and an inflatable mark or dan buoy at the starboard end at a finish line that will be to windward of the last mark of the course.

**C5 SHORTENED COURSE – COASTAL CLASS**

- 5.1 Courses may be shortened at a mark or virtual mark using the Yellowbrick Tracker and may be broadcast on the designated VHF Channel and by message on the Coastal WhatsApp group. The changes RRS 32.2(a)
- 5.2 If the Race Committee considers that conditions are not suitable to finish Bay Mark (V), the course may be shortened at other marks coordinates of the course using the Yellowbrick Tracker system.





# ADDENDUM – HYLAND RACING AREA (M)

## Melges 15 European Championships

### WINDWARD/LEEWARD

**STARTING AREA:** IN THE VICINITY OF SAOIRSE MARK (B) (APPROX 53° 18.85'N & 06° 07.37'W)

**VHF CHANNEL:** 68

**RACE OFFICER:** BILL O'HARA, IRO

**START & FINISH VESSEL:** DBSC FLAGSHIP FREEBIRD DISPLAYING GREEN DODGERS

**START & FINISH MARKS:** Starting and finishing marks may be either a rib with a flag, a mark, a dan buoy or similar. The inner distance mark, if laid, may be of the dan buoy type.

**WINDWARD/LEEWARD MARKS:** The course marks will be orange inflatable marks.

DAY & DATE	FIRST WARNING SIGNAL	STARTING SEQUENCE	CLASS FLAG	2025 (BST) HW DUN LAOGHAIRE
<b>THURSDAY 10<sup>TH</sup> JULY</b> PRACTICE RACE	1455	MELGES 15	Melges 15 Class Flag	12.26 3.7m
<b>FRIDAY 11<sup>TH</sup> JULY</b> 3 RACES	1125	MELGES 15	Melges 15 Class Flag	13.02 3.8m
<b>SATURDAY 12<sup>TH</sup> JULY</b> 4 RACES	1125	MELGES 15	Melges 15 Class Flag	13.38 3.9m
<b>SUNDAY 13<sup>TH</sup> JULY</b> 2 RACES	1055	MELGES 15	Melges 15 Class Flag	14.16 3.9m

#### **M1 Rules applicable to the Melges 15 Class only:**

- 1.1 All rules in Melges 15 Class Rules Section H shall apply.
- 1.2 RRS 61.1(a), 61.1(b), and 63.2(a) are changed in the notice of race.
- 1.3 RRS 41 adds: "(e) help to recover from the water and return on board a crew member, provided the return on board is at the approximate location of the recovery." This changes RRS 41.
- 1.4 Rule 26, Rule 29.1, Race Signal P Preparatory Signal, and Race Signal X Individual Recall are changed in SI ADDENDUM – MELGES 15 RACING AREA, M1 The Start.
- 1.5 RaceSense
  - (a) The Vakaros RaceSense system data shall be information freely available in the context of RRS 41(c).
  - (b) Each boat shall have a working Vakaros Atlas 2/Edge configured for RaceSense at check-in, which shall be mounted on the aft side of the mast at all times while racing. Each boat shall either provide a working Atlas 2/Edge at check-in for configuration with RaceSense, or an Atlas 2/Edge will be available for rental to any boat that does not have one available.
  - (c) RaceSense information is available to all boats.
  - (d) Failure of an Atlas 2/Edge or the RaceSense system shall not be grounds for a request for redress by a boat or the Protest Committee. This changes RRS 61.1(a), 61.1(b), and 63.2(a)
  - (e) DTL information may not be displayed on competitors' Vakaros devices. The 'Melges 15' class profile with the option 'Apply Melges 15 Class rules' should be selected for each device which suppresses the display of DTL on Atlas 2 devices. This will be checked at registration and ad hoc during the regatta.

The Melges 15 class will compete for inaugural European Championship honours as part of the 2025 Volvo Dun Laoghaire Regatta on Dublin Bay  
Photo: Afloat

VOLVO DUN LAOGHAIRE REGATTA 2025  
SAILING INSTRUCTIONS



**M2 THE START**

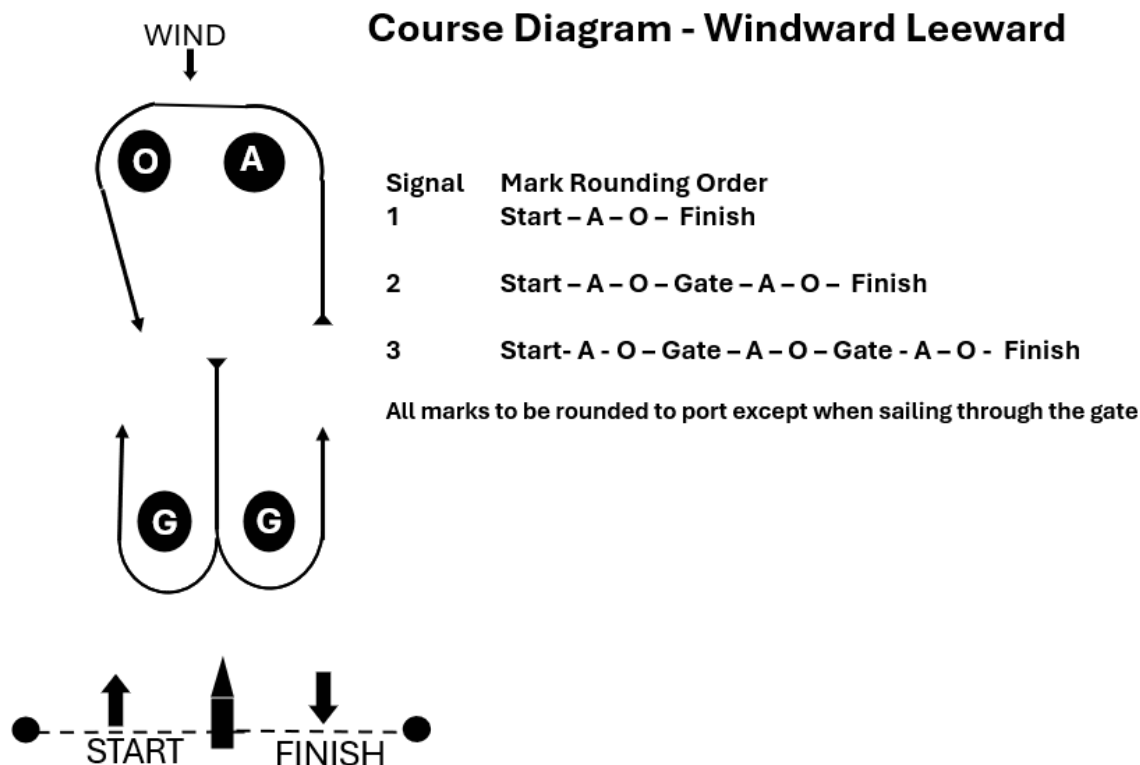
- 2.1 RRS 26 is changed. The countdown to the start from RaceSense will be the official time. Signal flags will only be used for information to spectators and media.

Minutes before starting signal	Visual signal on Vakaros Unit	Means
5	5:00	Warning Signal
4	4:00	Preparatory Signal
1	1:00	One minute
0	0:00	Starting Signal

- 2.2 Race signal Preparatory Signals P Preparatory signal is changed to 4:00 on a boat's Vakaros unit. This changes Race Signals P Preparatory signal.
- 2.3 The starting line will be between the red and white staff or the main mast on the race committee starting vessel at the starboard end and the port-end starting mark, or a staff on a rib displaying an orange flag.
- 2.4 Individual recalls will be made by the Vakaros RaceSense system. Notification will be via red lights on your Vakaros RaceSense after the start. If your device notifies you that you are OCS, you must sail back below the line until your unit light changes from red to green.
- 2.5 Race signal X Individual Recall is changed to the display of "OCS" and red lights on a boat's Vakaros unit.
- 2.6 RRS 29.1 is changed to, "When at a boat's starting signal any part of her hull is on the course side of the starting line or she must comply with rule 30.1, the race committee will promptly notify all such boats by displaying "OCS" and displaying red lights on the boat's Vakaros unit. The notification shall be displayed until the hull of the boat has been completely on the pre-start side of the starting line or one of its extensions, and until the boat has complied with rule 30.1 if it applies, but no later than four minutes after the starting signal or one minute before any later starting signal, whichever is earlier. If rule 29.2, 30.3 or 30.4 applies this rule does not.
- 2.7 RRS 30.3 and 30.4 add: "Additionally, the Race Committee may hail via the competitor VHF channel the list of boats identified as breaking RRS 30.3 or 30.4." This changes RRS 30.3 and 30.4.
- 2.8 A boat starting later than 4 minutes after her starting signal will be scored Did Not Start without a hearing. This changes RRS A3 and A5.
- 2.9 If the race committee Fly code flag V when the Orange Flag is displayed and before the warning signal Addendum M 2.2 ,2.3,2.5, 2.6, & 2.7 do not apply and races will be started using RRS Part 3.
- 2.10 If the RC vessel displays flag R with a sound signal before the warning signal of a race, competitors shall restart their Vakaros Atlas or Edge unit by switching it off, waiting 10 seconds and then switching it back on to reconnect to the RaceSense network. Flag R will remain displayed for a minimum of 2 minutes and will be removed with the next warning signal.

**M3 COURSE**

- 3.1 The course will be a Windward Leeward course shown in the course diagram overleaf.
- 3.2 The diagram shows the order in which marks are to be rounded or passed, the side on which each mark is to be left and the number of rounds.
- 3.3 The course to be sailed will be signalled by displaying a board with the number of rounds to be sailed.
- 3.4 The boards will be displayed on the race committee starting vessel from approximately 4 minutes before the start of each class to approximately 1 minute after the start of each class and it may be broadcast on the designated VHF channel. This changes RRS 27.1.
- 3.5 No later than the warning signal the race committee starting vessel may display the approximate compass bearing of the first leg.



#### **M4 THE FINISH**

- 4.1 The finish line will be between a staff/mast on the finishing vessel at the starboard end and an inflatable mark or dan buoy at the port end.

#### **M5 TIME LIMITS**

- 5.1 The Race Time Limit (see RRS 35) is 60 minutes.
- 5.2 The first mark time limit is 25 minutes.
- 5.3 The Finishing Window is the time for boats to finish after the first boat sails the course and finishes. Boats failing to finish within the Finishing Window, and not subsequently retiring, penalized, or given redress, will be scored Time Limit Expired (TLE) without a hearing. A boat scored TLE shall be scored points for the finishing place two more than the points scored by the last boat that finished within the Finishing Window. This changes RRS 35, A5.1, and A10.
- 5.4 The Finishing Window time limit is 20 minutes.

#### **M6 PRIZES**

- 6.1 In addition to prizes listed in SI 22, prizes will be awarded to Top Youth; Top Woman; Top Couple; Top Family; Top Master (age 50 to 59 years); Top Grand Master (ages 60 to 69) and Top Mega Master (age 70 and above).
- 6.2 The winner of the European Championship will be presented with 'The Dun Laoghaire Hyland Trophy'.

#### **M7 SCORING.**

In replacement for SI 18, the event will be scored under M15 Class Rules.

- 7.1 3 races are required to constitute a series
- 7.2 When fewer than six races have been completed, a boat's series score will be the total of her race scores.
- 7.3 When six or more races have been completed, a boat's series score will be the total of her race scores excluding her worst score.

# ADDENDUM – Introductory Cruiser Class (H)

## FIXED MARK COURSE

**STARTING AREA:** IN THE VICINITY OF Dun Laoghaire Harbour or from the West Pier Hut

**VHF CHANNEL:** 69

**RACE OFFICER:** WEST PIER HUT – TBA

**START & FINISH:** Per H1 and H3 below.

**COURSE MARKS:** The Chart in SI Fixed Mark and Course Area Chart Addendum indicates the letters/name and the approximate positions/type of mark are shown in SI Fixed Mark Addendum.

DAY & DATE	FIRST WARNING SIGNAL	STARTING SEQUENCE	CLASS FLAG	HW DUN LAOGHAIRE
<b>FRIDAY 11<sup>TH</sup></b> JULY 1 RACE	1155	Introductory Cruiser Class	ICF D	13.02 3.8m
<b>SATURDAY 12<sup>TH</sup></b> JULY 1 RACE	1155	Introductory Cruiser Class	ICF D	13.38 3.9m
<b>SUNDAY 13<sup>TH</sup></b> JULY 1 RACE	1125	Introductory Cruiser Class	ICF D	14.16 3.9m

### H1 THE START

- 1.1 From West Pier Hut - The starting line will be between an orange line on the northeast corner of the DBSC West Pier Hut and the orange limit mark.

### H2 COURSE

- 2.1 The course will be decided on the day of the race.
- 2.2 The course will be sailed around fixed marks as shown on the chart in SI Fixed Mark and Course Area Chart Addendum and approximate positions in SI Fixed Mark Addendum.
- 2.3 The race committee will broadcast the course to be sailed before the warning signal and repeat it on request.
- 2.4 The race committee may display a series of letters designating fixed marks. Boats shall pass the marks in the order displayed. A number completing the series designates the number of laps to be sailed.

### H3 THE FINISH

- 3.1 At the West Pier Hut - The finish line shall be between the orange limit mark and an orange line on the northeast corner of the DBSC West Pier Hut.





Three WhatsApp groups have been created within the VDLR 2025 WhatsApp community to provide easy access to information. Take a picture of the QR code to link to the group.



VDLR 2025 Regatta Information



VDLR 2025 Social

A VDLR 2025 Coastal Class WhatsApp group has also been established. Details will be provided to entrants in the Coastal flee at registration.

# SI CODE FLAG

## ADDENDUM

CRUISER CLASS 0	NUMERAL 0	
CRUISER CLASS 1	NUMERAL 1	
CRUISER CLASS 2	NUMERAL 2	
CRUISER CLASS 3	NUMERAL 3	
CRUISER CLASS 4	NUMERAL 4	
NON SPINNAKER 1	NUMERAL 1	
NON SPINNAKER 2	NUMERAL 2	
COASTAL	NUMERAL 5	
BENETEAU 31.7	NUMERAL 9	
J80	E	
SIGMA 33	E	
RUFFIAN 23	R	
SHIPMAN	W	
GLEN	K	
HOWTH 17	E	
DRAGON	D	
FLYING 15	NAVAL NUMERAL 6	
SB20	J	
FIREBALL	F	
MERMAID	M	
IDRA 14	Q	
WATER WAG	NUMERAL 4	
BENETEAU 211	NUMERAL 9	
ILCA 6 & 7	LASER CLASS FLAG	
WAYFARER	E	
MIXED SPORTSBOAT	3RD SUBSTITUTE	
DB21	H	
RS21	K	
INTRODUCTORY CLASS	D	
MELGES 15	MELGES 15 CLASS FLAG	

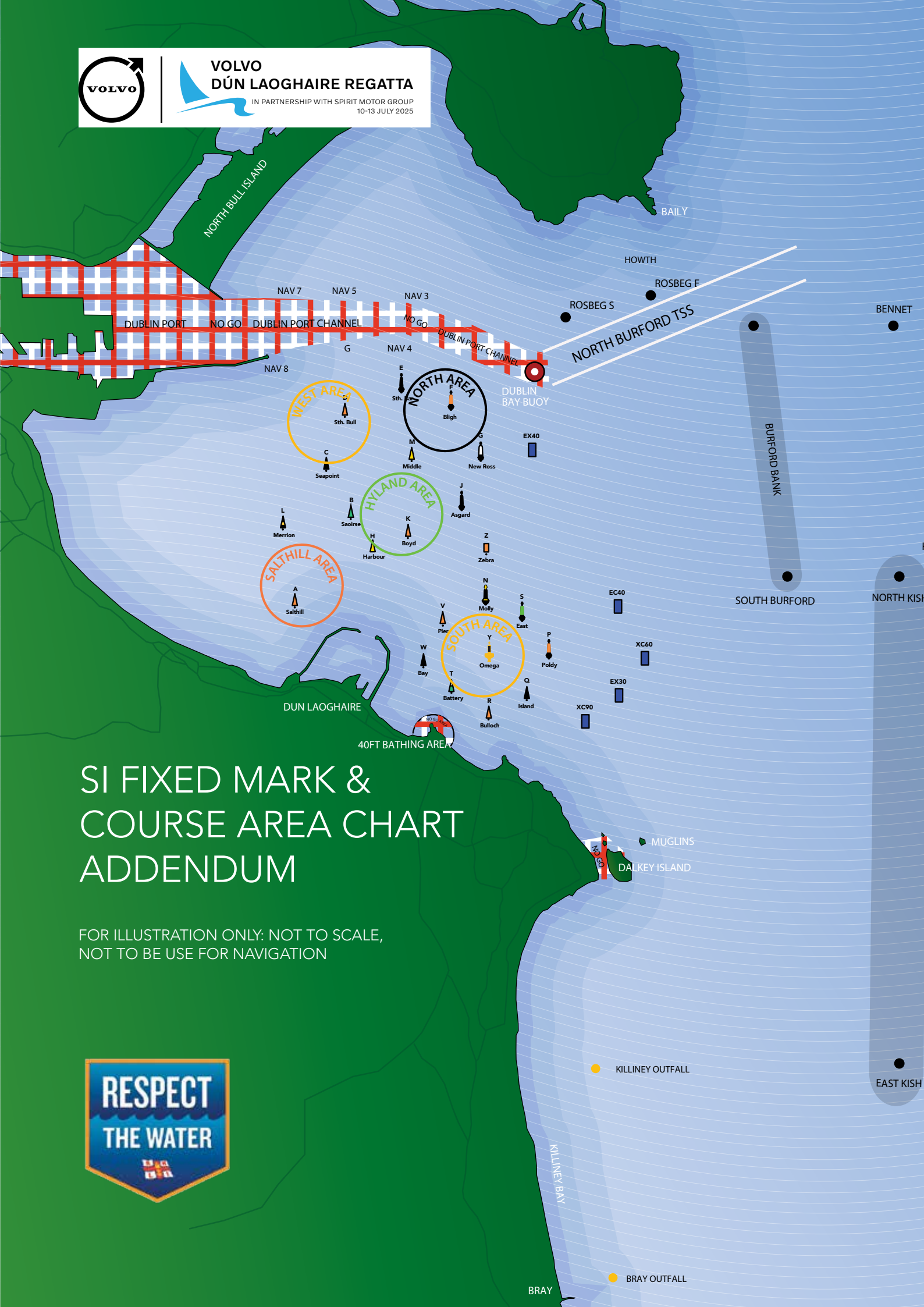
# SI FIXED MARK

## ADDENDUM

TYPE	LETTER	NAME	COLOUR	LAT	LONG
DBSC Racing Mark	A	SALTHILL	ORANGE	53°18.36'N	06°09.00'W
DBSC Racing Mark	B	SAOIRSE	GREEN	53°19.02'N	06°08.15'W
DBSC Racing Mark	C	SEAPOINT	BLACK	53°19.48'N	06°08.60'W
DBSC Racing Mark	D	SOUTH BULL	ORANGE	53°20.00'N	06°08.30'W
DBSC Racing Mark	E	SOUTH BAR	BLACK/YELLOW	53°20.22'N	06°07.45'W
DBSC Racing Mark	F	BLIGH	ORANGE/YELLOW	53°20.08'N	06°06.70'W
DBSC Racing Mark	G	NEW ROSS	BLACK/WHITE/YELLOW	53°19.60'N	06°06.30'W
DBSC Inflatable Mark	H	HARBOUR	ORANGE	53.18.56'N	06°07.77'W
DBSC Racing Mark	J	ASGARD	BLACK	53°19.11'N	06°06.56'W
DBSC Racing Mark	K	BOYD	ORANGE	53°18.85'N	06°07.37'W
DBSC Racing Mark	L	MERRION	BLACK/YELLOW	53°18.92'N	06°09.20'W
DBSC Racing Mark	M	MIDDLE	YELLOW	53°19.55'N	06°07.48'W
DBSC Racing Mark	N	MOLLY	BLACK/YELLOW	53°18.28'N	06°06.28'W
DBSC Racing Mark	P	POLDY	ORANGE	53°17.82'N	06°05.40'W
DBSC Racing Mark	Q	ISLAND	BLACK	53°17.45'N	06°05.58'W
DBSC Racing Mark	R	BULLOCH	ORANGE	53°17.28'N	06°06.16'W
DBSC Racing Mark	S	EAST	GREEN/YELLOW	53°18.16'N	06°05.68'W
DBSC Racing Mark	T	BATTERY	GREEN/WHITE	53°17.46'N	06°06.68'W
DBSC Racing Mark	V	PIER	ORANGE	53°18.10'N	06°06.84'W
DBSC Racing Mark	X	TURNING	YELLOW	53°18.43'N	06°08.34'W
DBSC Racing Mark	W	BAY	BLACK	53°17.73'N	06°07.10'W
DBSC Racing Mark	Y	OMEGA	YELLOW/BLACK	53°17.78'N	06°06.23'W
CARDINAL		NORTH BURFORD	CARDINAL MARK	53°20.50'N	06°01.49'W
CARDINAL		BENNET	CARDINAL MARK	53°20.17'N	05°55.13'W
CARDINAL		SOUTH BURFORD	CARDINAL MARK	53°18.06'N	06°01.29'W
LIGHTHOUSE		KISH LIGHT	LIGHTHOUSE	53°18.65'N	05°55.54'W
OUTFALL BUOY		KILLINEY OUTFALL	YELLOW	53°14.90'N	06°05.06'W
OUTFALL BUOY		BRAY OUTFALL	YELLOW	53°13.15'N	06°04.49'W
CARDINAL		EAST KISH	LATERAL MARK	53°14.34'N	05°53.58'W
CARDINAL		NORTH KISH	LATERAL MARK	53°18.55'N	05°56.43'W
ISLAND		MUGLINS	RED WHITE LIGHT	53°16.53'N	06°04.57'W
INFLATABLE	EX40	VOLVO 2	BLUE	53°19.50'N	06°05.88'W
INFLATABLE	EC40	VOLVO 3	BLUE	53°18.38'N	06°04.20'W
INFLATABLE	XC60	VOLVO 4	BLUE	53°17.85'N	06°04.00'W
INFLATABLE	EX30	VOLVO 5	BLUE	53°17.41'N	06°04.20'W
INFLATABLE	XC90	VOLVO 6	BLUE	53°17.10'N	06°05.00'W



IN PARTNERSHIP WITH SPIRIT MOTOR GROUP  
10-13 JULY 2025



FOR ILLUSTRATION ONLY: NOT TO SCALE,  
NOT TO BE USE FOR NAVIGATION

 KILLINEY OUTFALL

● BRAY OUTFALL



The Grand Soleil Samatom from Howth races past the East Pier Lighthouse in the 2023 Volvo Dun Laoghaire Regatta on Dublin Bay  
Photo: Afloat

VOLVO DUN LAOGHAIRE REGATTA 2025  
SAILING INSTRUCTIONS





# NOTES

**V O L V O**

# Volvo XC90 Recharge plug-in hybrid

The electric car with a backup plan.  
Now with extended range.



Model shown for illustrative purposes only.

**Spirit Volvo**

Birch Avenue, Sandyford Business Park, Dublin 18

Ph: (01) 489 3700

[www.spiritvolvo.ie](http://www.spiritvolvo.ie)